

DESIGN
TEX

Acacia
2843

Upholstery

environmental Design
extreme Performance



Acacia

2843



2843-101



2843-401



2843-501



2843-502



2843-601



2843-602



2843-701



2843-702



2843-901



2843-902

Note: image has been sized to represent all colors

Usage	Upholstery
Width	54"
Repeat	V-7 1/2" H-14 1/2"
Finish	Crypton® Green
Contents	100% Recycled Polyester
Abrasion	100,000 Wyzenbeek
Cleaning Code	W (Crypton Method)
Warranty	10 years

Fabric shown railroaded.

NFPA 260 (UFAC) Class I

Custom colors available through Unique Solutions.

Meets or exceeds these ACT Performance standards:

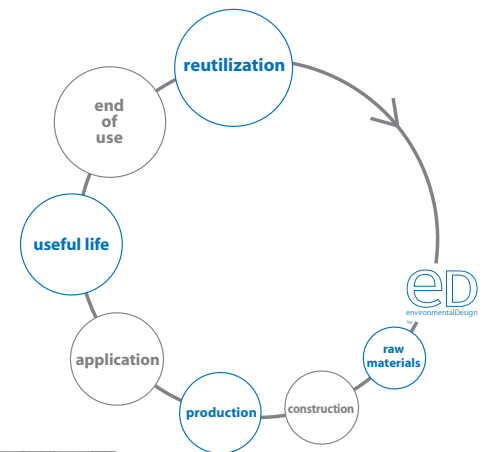


* ACT Registered Certification Marks



environmental Design

recycled ingredients
energy use
water use
reutilization of production waste
low emitting
recyclable



There may be variation in color, texture and finish between the sample shown and the actual product.

©DesignTex

DesignTex
800 221 1540
www.designtex.com

A Steelcase Company

DESIGN
TEX

Agave
2847

Upholstery

environmental Design
extreme Performance



Agave 2847



2847-101



2847-102



2847-401



2847-501



2847-502



2847-601



2847-602



2847-701



2847-901

Note: image has been sized to represent all colors

Usage	Upholstery
Width	54"
Repeat	V-6 3/4" H-5 1/4"
Finish	NANO-TEX™ Resists Spills
Backing	Acrylic
Contents	100% Solution Dyed Nylon
Abrasion	100,000 Wyzenbeek
Cleaning Code	WS
Warranty	10 years

Fabric shown railroaded.

NFPA 260 (UFAC) Class 1

Custom colors available through Unique Solutions.

Meets or exceeds these ACT Performance standards:

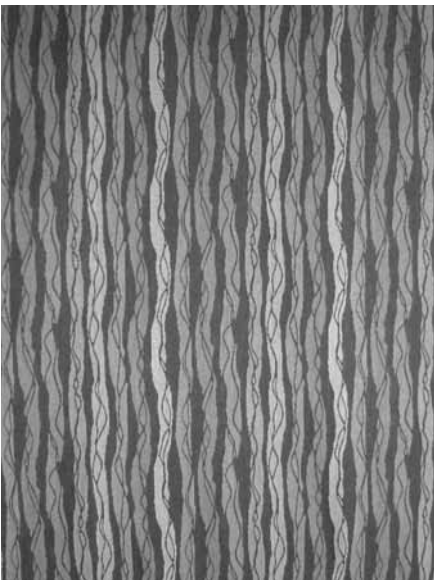
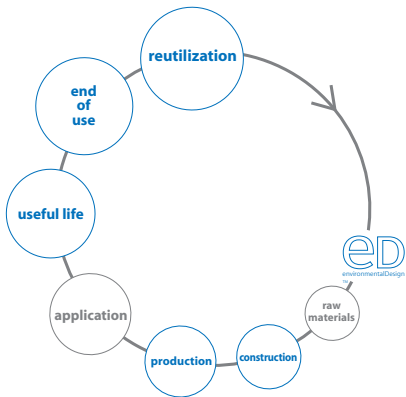


* ACT Registered Certification Marks



environmental Design

compatible for closed loop
water use
reutilization of production waste
low emitting
take back program
recyclable



There may be variation in color, texture and finish between the sample shown and the actual product.

NANO-TEX™ Resists Spills is a trademark of Nano-Tex, LLC.

©Designtex

Designtex
800 221 1540
www.designtex.com

A Steelcase Company

DESIGN
TEX

Alistair
2992

Upholstery

environmental Design
extreme Performance



Alistair
2992



2992-101



2992-301



2992-302



2992-401



2992-402



2992-501



2992-502



2992-601



2992-701



2992-901



2992-902

Usage	Upholstery
Width	55"
Repeat	V-15" H-13"
Finish	Crypton Green®
Contents	100% Recycled Polyester
Abrasion	60,000 Wyzenbeek
Cleaning Code	W
Warranty	10 years

NFPA 260 (UFAC) Class I

Custom colors available through Unique Solutions.

Meets or exceeds these ACT Performance standards:

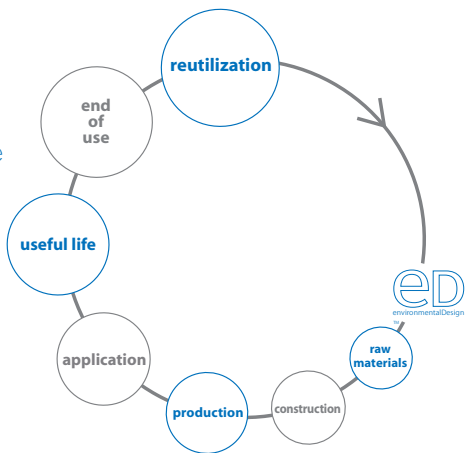


* ACT Registered Certification Marks



environmental Design

recycled ingredients
energy use
water use
reutilization of production waste
low emitting
recyclable



There may be variation in color, texture and finish between the sample shown and the actual product.

©Designtex

Designtex
800 221 1540
www.designtex.com

A Steelcase Company

Note: image has been sized to represent all colors

DESIGN
TEX

Amaranth
2855

Upholstery

environmental Design
extreme Performance



Amaranth

2855



2855-101



2855-301



2855-401



2855-402



2855-501



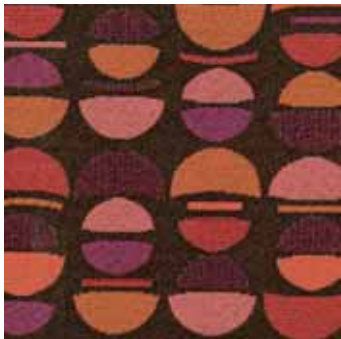
2855-502



2855-601



2855-801



2855-901

Note: image has been sized to represent all colors

Usage	Upholstery
Width	54"
Repeat	V-16 1/2" H-10"
Finish	Crypton® Green
Contents	100% Recycled Polyester
Abrasion	60,000 Wyzenbeek
Cleaning Code	W (Crypton Method)
Warranty	10 years

NFPA 260 (UFAC) Class 1

Custom colors available through Unique Solutions.

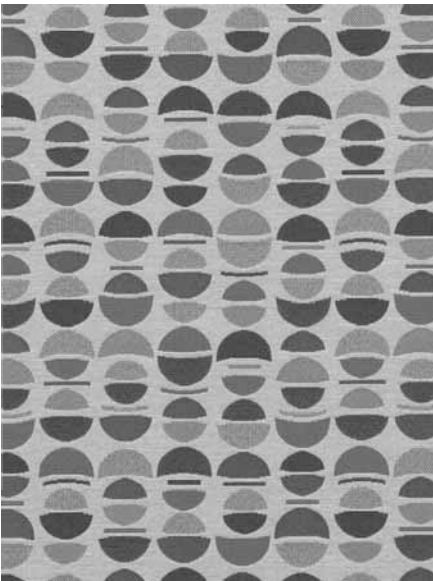
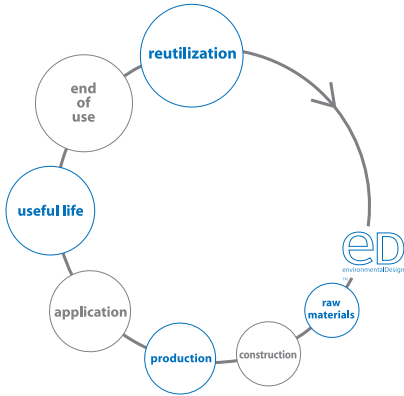
Meets or exceeds these ACT Performance standards:

* ACT Registered Certification Marks



environmental Design

- recycled ingredients
- energy use
- water use
- reutilization of production waste
- low emitting
- recyclable



There may be variation in color, texture and finish between the sample shown and the actual product.

©Designtex
 Designtex
 800 221 1540
www.designtex.com

A Steelcase Company

DESIGN
TEX

Appleseed
2682

Upholstery
Panel

environmental Design
extreme Performance

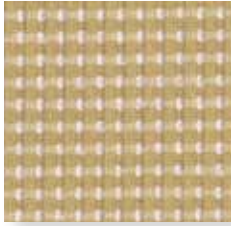


Appleseed

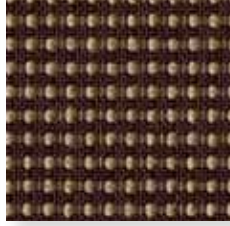
2682



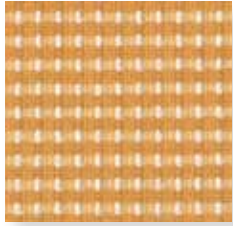
2682-101 Linen



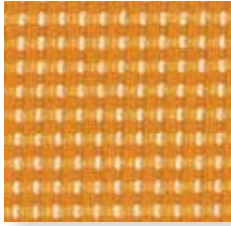
2682-102 Parchment



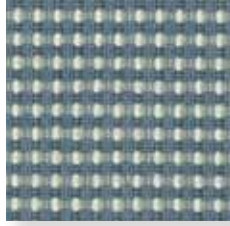
2682-103 Praline



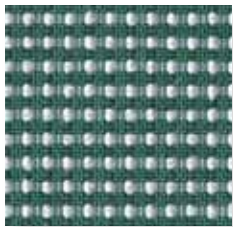
2682-201 Sesame



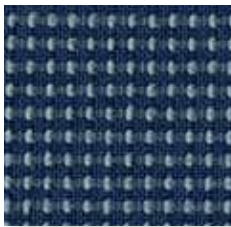
2682-202 Dandelion



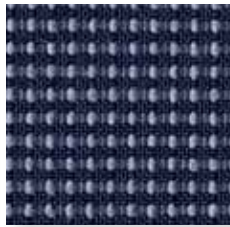
2682-401 Wedgewood



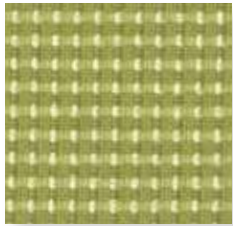
2682-402 Lake



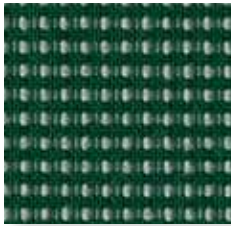
2682-403 Indigo



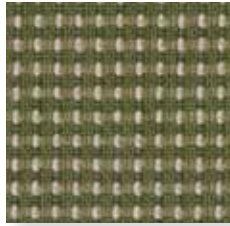
2682-404 Iris



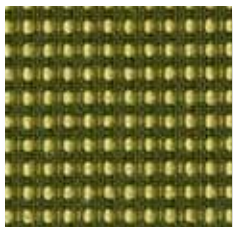
2682-501 Endive



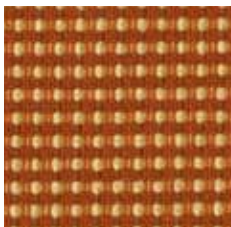
2682-502 Spruce



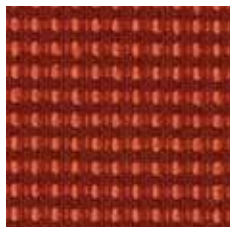
2682-503 Lichen



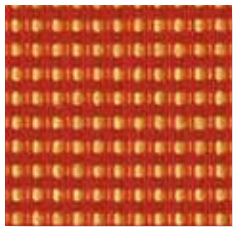
2682-505 Cypress



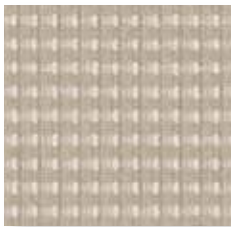
2682-701 Harvest



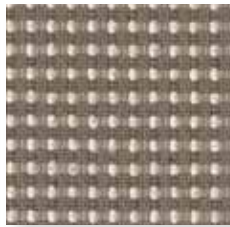
2682-702 Paprika



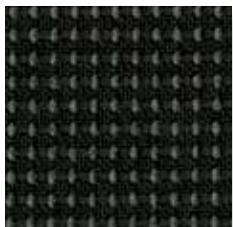
2682-703 Marigold



2682-801 Fog



2682-802 Graphite



2682-803 Cinder

Usage	Upholstery Panel Systems
Width	55"
Repeat	none
Weight	16.5 oz./lin.yd.
Finish	NanoSphere®
Contents	100% Recycled Polyester
Abrasion	100,000 Wyzenbeek
Cleaning Code	WS
Warranty	10 years

Passes ASTM E-84 Unadhered Class A

Custom colors available through Unique Solutions.

Meets or exceeds these ACT Performance standards:



* ACT Registered Certification Marks

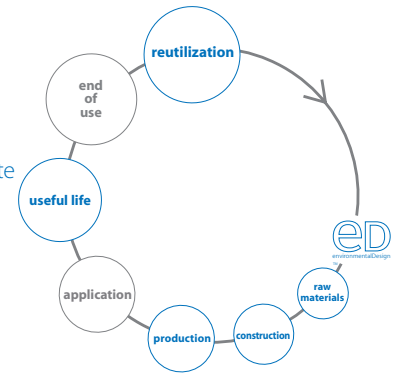


Based on environmentally optimal C6 nanotechnology, NanoSphere® offers:

- Superior stain resistance
- Water repellent
- Easy cleaning
- Durable and long lasting
- Maintains textile appearance and character
- NanoSphere technology is based on the bluesign® standard

environmental Design

recycled ingredients
compatible for closed loop
energy use
water use
reutilization of production waste
low emitting
recyclable



There may be variation in color, texture and finish between the sample shown and the actual product.

© Designtex

Designtex
800.221.1540
designtex.com

Designtex operates as a carbon neutral company

A Steelcase Company

DESIGN
TEX

Basket Weaver
3296

Upholstery

environmental Design



Basket Weaver
3296



3296-101



3296-102



3296-201



3296-401



3296-501



3296-502



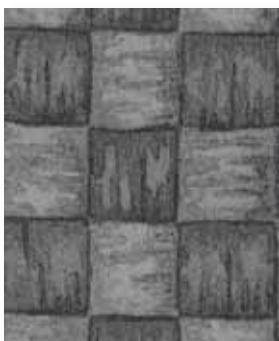
3296-601



3296-701



3296-801



3296-802

Usage	Upholstery
Width	54"
Repeat	V-9" H-7 1/2"
Contents	80% Recycled Polyester 20% Polyurethane
Abrasion	100,000+ Wire Screen
Cleaning Code	WS
Warranty	10 years

NFPA 260 (UFAC) Class I

Custom colors available through Unique Solutions.

Meets or exceeds these ACT Performance standards:



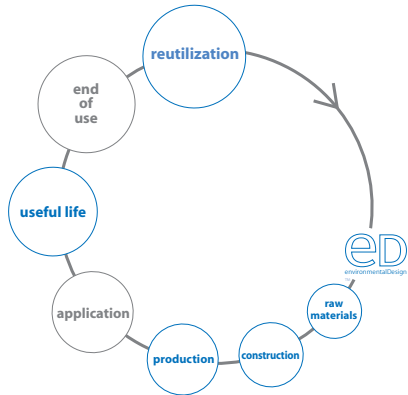
* ACT Registered Certification Marks

Passes The Collaborative for High Performance Schools
Section 01350

This product may contribute to the LEED Materials
and Resources Credit for Recycled Content.

environmental Design

recycled ingredients
alternative to pvc
chemically optimized
water use
low emitting
waste to fuel



There may be variation in color, texture and finish
between the sample shown and the actual product.

©Designtex
Designtex
800 221 1540
www.designtex.com

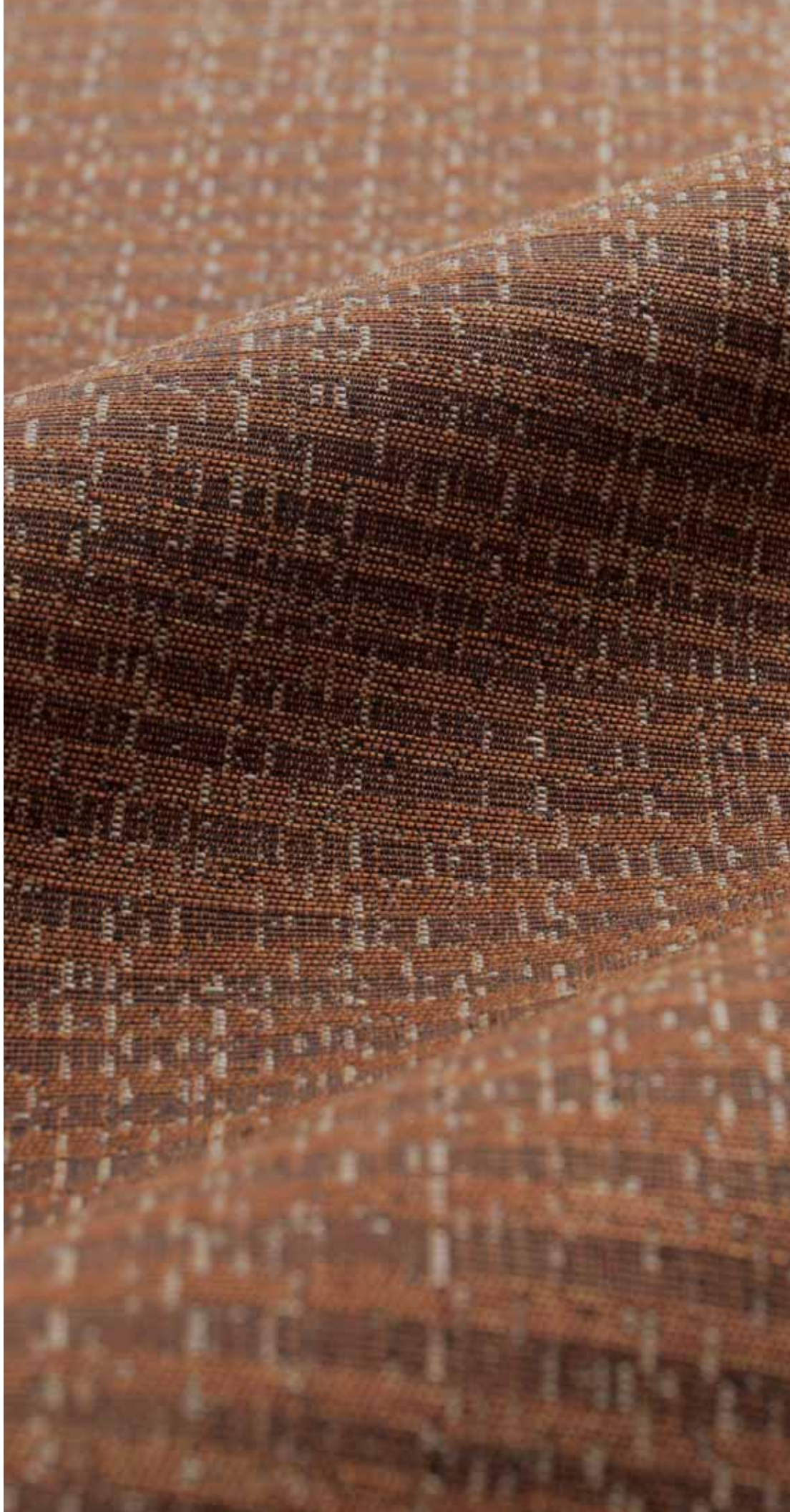
A Steelcase Company

DESIGN
Tex

Bliss
2770

Upholstery

environmental Design
extreme Performance



Bliss
2770



2770-101



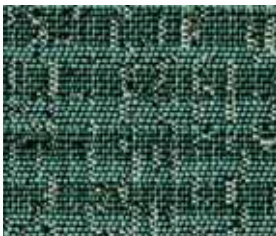
2770-102



2770-401



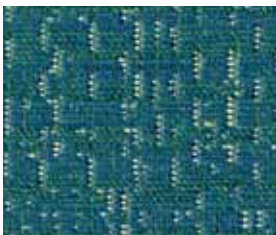
2770-501



2770-502



2770-503



2770-504



2770-601



2770-602



2770-701



2770-702



2770-801



2770-901

Usage	Upholstery
Width	54"
Repeat	V-11" H-5 1/4"
Finish	NANO-TEX™ Resists Spills
Backing	Acrylic
Contents	100% Solution Dyed Nylon
Abrasion	90,000 Wyzenbeek
Cleaning Code	WS
Warranty	10 years

NFPA 260 (UFAC) Class I

Custom colors available through Unique Solutions.

Meets or exceeds these ACT Performance standards:

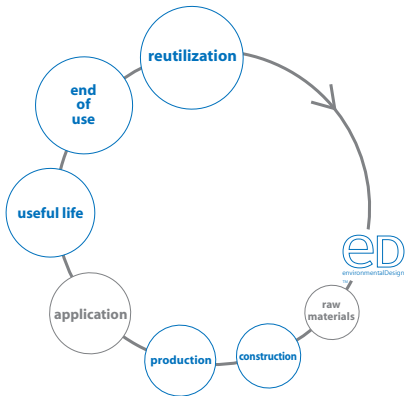


* ACT Registered Certification Marks



environmental Design

compatible for closed loop
water use
reutilization of production waste
low emitting
take back program
recyclable



There may be variation in color, texture and finish between the sample shown and the actual product.

NANO-TEX™ Resists Spills is a trademark of Nano-Tex, LLC.

©Designtex

Designtex
800 221 1540
www.designtex.com

A Steelcase Company

DESIGN
TEX

Boreas
2728

Upholstery

environmental Design
extreme Performance



Boreas

2728



2728-101



2728-102



2728-103



2728-201



2728-301



2728-401



2728-402



2728-403



2728-404



2728-501



2728-601



2728-701



2728-801

Note: image has been sized to represent all colors

Usage	Upholstery
Width	54"
Repeat	V-30" H-5 1/4"
Finish	NANO-TEX™ Resists Spills
Backing	Acrylic
Contents	100% Solution Dyed Nylon
Abrasion	100,000+ Wyzenbeek
Cleaning Code	WS
Warranty	10 years

Custom colors available through Unique Solutions.

Meets or exceeds these ACT Performance standards:

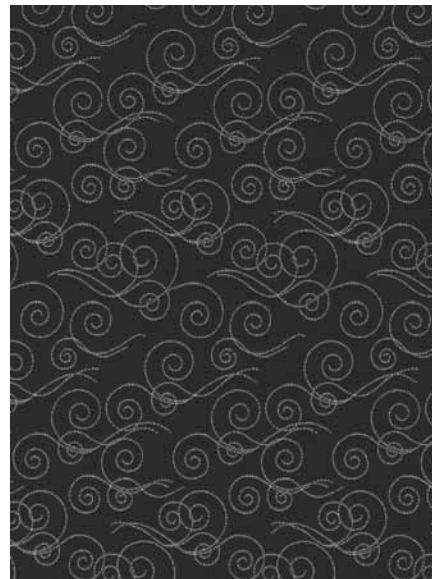
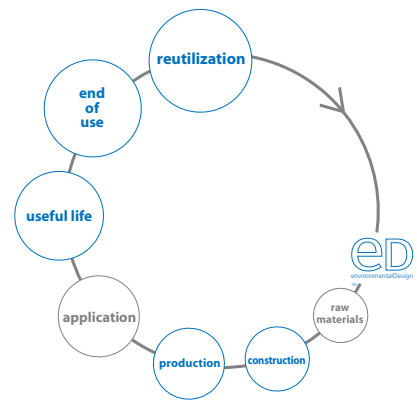


* ACT Registered Certification Marks



environmental Design

compatible for closed loop
water use
reutilization of production waste
low emitting
take back program
recyclable



There may be variation in color, texture and finish between the sample shown and the actual product.

NANO-TEX™ Resists Spills is a trademark of Nano-Tex, LLC.

©DesignTex

DesignTex
800 221 1540
www.designtex.com

A Steelcase Company

DESIGN
TEX

Cassava
2838

Upholstery

environmental Design
extreme Performance



Cassava
2838



2838-101



2838-401



2838-402



2838-501



2838-601



2838-701



2838-901

Usage	Upholstery
Width	54"
Repeat	V-24 3/4" H-30"
Finish	Crypton® Green
Contents	100% Recycled Polyester
Abrasion	60,000 Wyzenbeek
Cleaning Code	W (Crypton Method)
Warranty	10 years

NFPA 260 (UFAC) Class 1

Custom colors available through Unique Solutions.

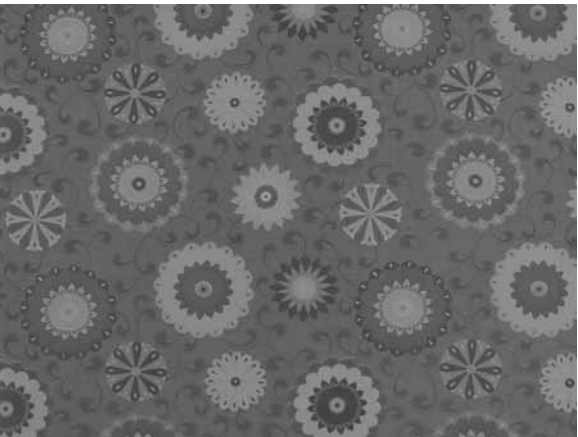
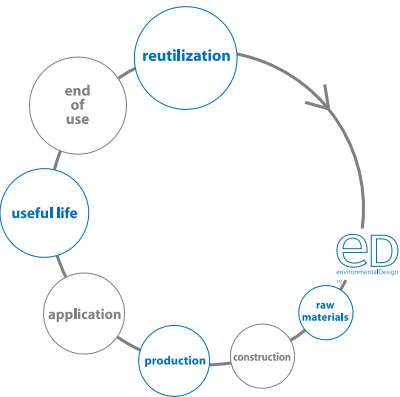
Meets or exceeds these ACT Performance standards:



SCS (Scientific Certification Systems) Gold Indoor Advantage™

environmental Design

recycled ingredients
energy use
water use
reutilization of production waste
low emitting
recyclable



There may be variation in color, texture and finish between the sample shown and the actual product.

©Designtex
Designtex
800 221 1540
www.designtex.com

A Steelcase Company

DESIGN
Tex

Chicory
2993

Upholstery

environmental Design
extreme Performance



Chicory 2993



2993-101



2993-301



2993-302



2993-401



2993-402



2993-501



2993-502



2993-701



2993-901



2993-902

Usage	Upholstery
Width	54"
Repeat	V-9 3/4" H-5 1/4"
Finish	NANO-TEX™ Resists Spills
Backing	Acrylic
Contents	100% Solution Dyed Nylon
Abrasion	100,000+ Wyzenbeek
Cleaning Code	WS
Warranty	10 years

NFPA 260 (UFAC) Class 1

Custom colors available through Unique Solutions.

Meets or exceeds these ACT Performance standards:

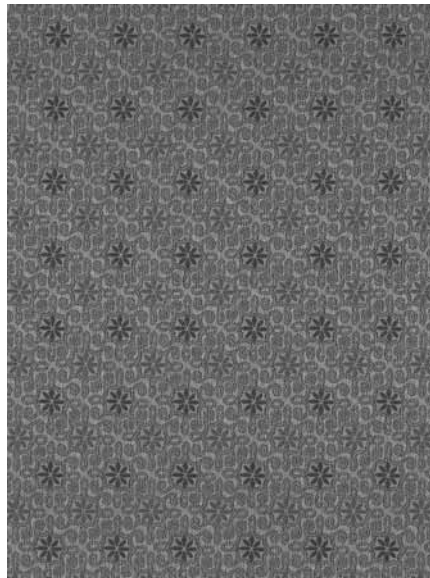
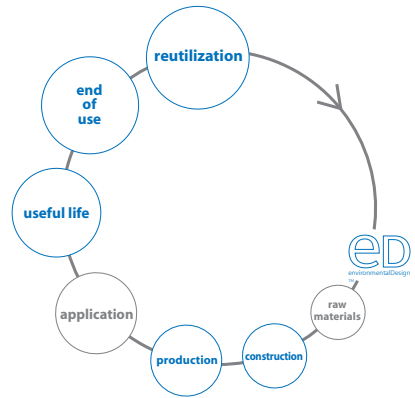


* ACT Registered Certification Marks

NANOtex™
Fabric to the Next™

environmental Design

compatible for closed loop
water use
reutilization of production waste
low emitting
take back program
recyclable



There may be variation in color, texture and finish between the sample shown and the actual product.

NANO-TEX™ Resists Spills is a trademark of Nano-Tex, LLC.

©DesignTex

DesignTex
800 221 1540
www.designtex.com

A Steelcase Company

DESIGN
TEX

Dahlia
2995

Upholstery

environmental Design
extreme Performance



Dahlia

2995



2995-301



2995-302



2995-401



2995-402



2995-501



2995-502



2995-601



2995-701



2995-901



2995-902

Note: image has been sized to represent all colors

Usage	Upholstery
Width	54"
Repeat	V-5 1/4" H-5 1/4"
Finish	NANO-TEX™ Resists Spills
Backing	Acrylic
Contents	100% Solution Dyed Nylon
Abrasion	100,000+ Wyzenbeek
Cleaning Code	WS
Warranty	10 years

NFPA 260 (UFAC) Class 1

Custom colors available through Unique Solutions.

Meets or exceeds these ACT Performance standards:

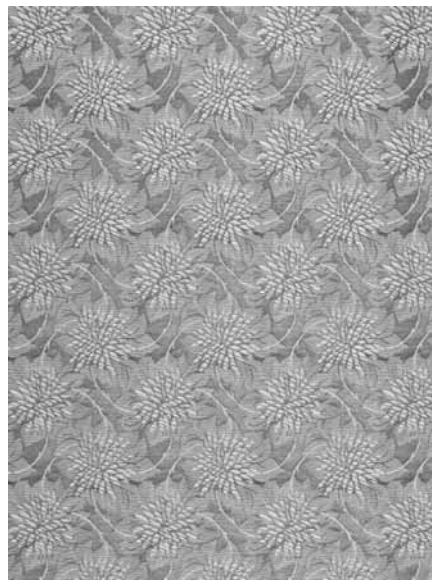
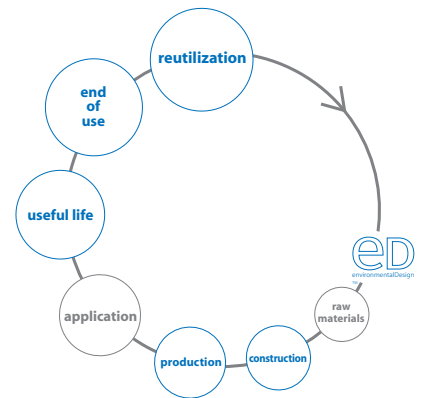


* ACT Registered Certification Marks



environmental Design

compatible for closed loop
water use
reutilization of production waste
low emitting
take back program
recyclable



There may be variation in color, texture and finish between the sample shown and the actual product.

NANO-TEX™ Resists Spills is a trademark of Nano-Tex, LLC.

©DesignTex

DesignTex
800 221 1540
www.designtex.com

A Steelcase Company

DESIGN
TEX

Delaine
3249

Upholstery

environmental Design
extreme Performance

Delaine
3249



3249-101 Buff



3249-201 Lemonade



3249-501 Pear



3249-102 Camel



3249-701 Nasturtium



3249-502 Grass



3249-801 Marble



3249-301 Lipstick



3249-503 Moss



3249-802 Graphite



3249-302 Crimson



3249-401 Sea



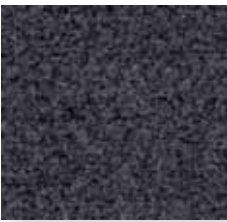
3249-103 Peppercorn



3249-601 Orchid



3249-402 Peacock



3249-803 Charcoal



3249-602 Plum



3249-403 Indigo



3249-603 Violet

Usage	Upholstery
Width	54"
Repeat	none
Finish	Crypton® Green
Backing	Crypton® Barrier
Contents	60% Recycled Polyester 40% Polyester
Abrasion	50,000 Wyzenbeek
Cleaning Code	W
Warranty	10 years

Custom colors available through Unique Solutions.

Meets or exceeds these ACT Performance standards:

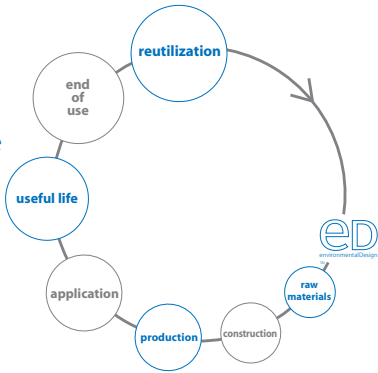


* ACT Registered Certification Marks



environmental Design

recycled ingredients
energy use
water use
reutilization of production waste
low emitting
recyclable



There may be variation in color, texture and finish between the sample shown and the actual product.

© Designtex
Designtex
800 221 1540
designtex.com

Designtex operates as a carbon neutral company
A Steelcase Company

DESIGN
TEX

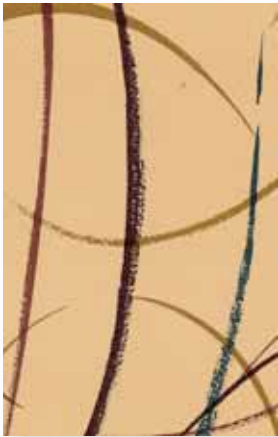
Downtown
2029

Upholstery

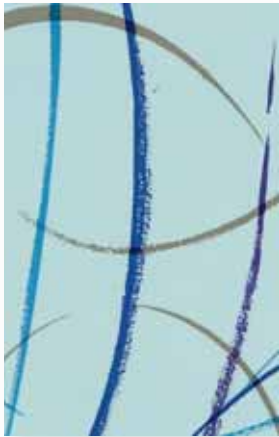
environmental Design
extreme Performance



Downtown 2029



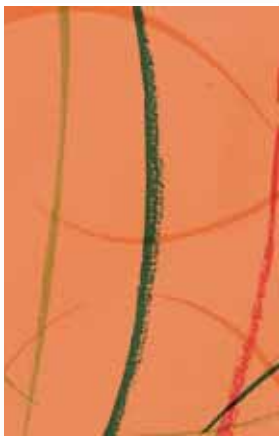
2029-101



2029-401



2029-501



2029-701



2029-801



2029-901



2029-902

Usage	Upholstery
Width	54"
Repeat	V-24" H-18"
Contents	70% Recycled Polyester 30% Polyurethane
Abrasion	100,000+ Wire Screen
Cleaning Code	WS
Warranty	10 years

NFPA 260 (UFAC) Class 1

Custom colors available through Unique Solutions.



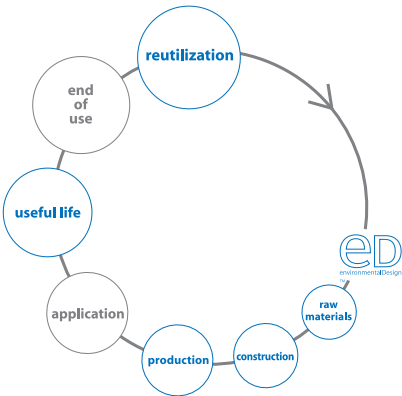
* ACT Registered Certification Marks

Passes The Collaborative for High Performance Schools Section 01350.

This product may contribute to the LEED Materials and Resources Credit for Recycled Content.

environmental Design

recycled ingredients
alternative to pvc
chemically optimized
water use
low emitting
waste to fuel



There may be variation in color, texture and finish between the sample shown and the actual product.

©Designtex

Designtex
800 221 1540
www.designtex.com

A Steelcase Company

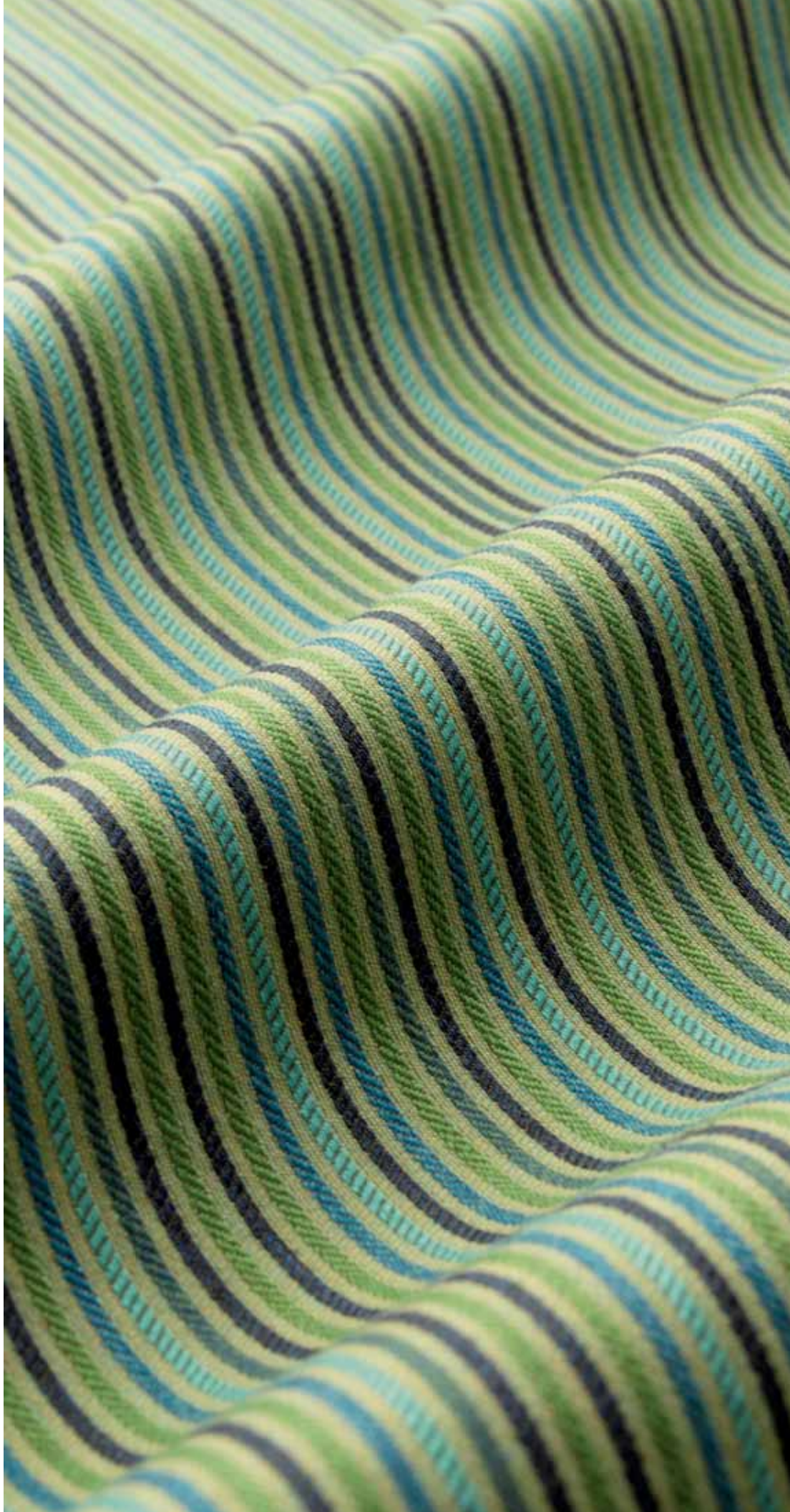
Note: image has been sized to represent all colors

DESIGN
TEX

Eastside
3304

Upholstery

environmental Design
extreme Performance



Eastside

3304



3304-101



3304-301



3304-401



3304-501



3304-502



3304-601



3304-701



3304-801



3304-901



3304-902



3304-903

Usage	Upholstery
Width	54"
Repeat	V-none H-24"
Finish	NanoSphere™
Backing	Acrylic
Contents	100% Solution Dyed Nylon
Abrasion	100,000 Wyzenbeek
Cleaning Code	WS
Warranty	10 years

Fabric shown railroaded.

NFPA 260 (UFAC) Class 1

Custom colors available through Unique Solutions.

Meets or exceeds these ACT Performance standards:



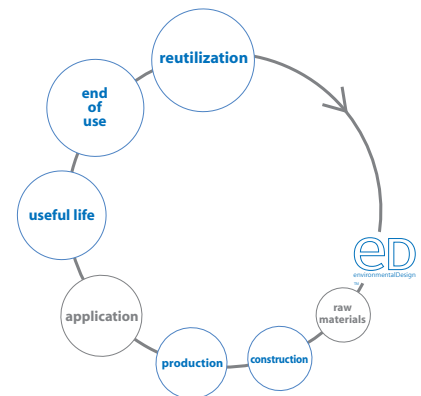
* ACT Registered Certification Marks



Solution Dyed Nylon products are supported by a reclamation program, enabling the nylon fiber to be recycled into nylon carpet. Please contact your local Designtex sales representative for reclamation details.

environmental Design

compatible for closed loop
water use
reutilization of production waste
green cleaning compatible
low emitting
take back program
recyclable



There may be variation in color, texture and finish between the sample shown and the actual product.

Designtex is the holder of a NanoSphere™ License.

©Designtex

Designtex
800 221 1540
www.designtex.com

A Steelcase Company

DESIGN
TEX

Epiphany
2734

Upholstery

environmental Design
extreme Performance

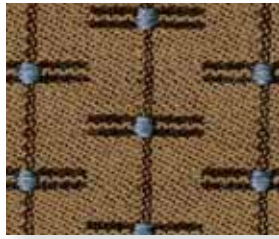


Epiphany

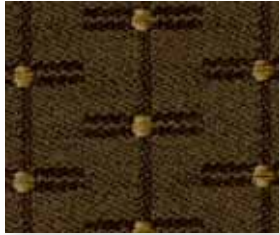
2734



2734-101



2734-102



2734-103



2734-301



2734-302



2734-401



2734-402



2734-501



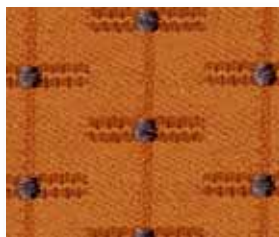
2734-502



2734-503



2734-601



2734-701



2734-801

Usage	Upholstery
Width	55 1/2"
Repeat	V-3/4" H-1 1/4"
Finish	NANO-TEX™ Resists Spills
Contents	100% Recycled Polyester
Abrasion	100,000+ Wyzenbeek
Cleaning Code	WS
Warranty	10 years

Custom colors available through Unique Solutions.

Meets or exceeds these ACT Performance standards:

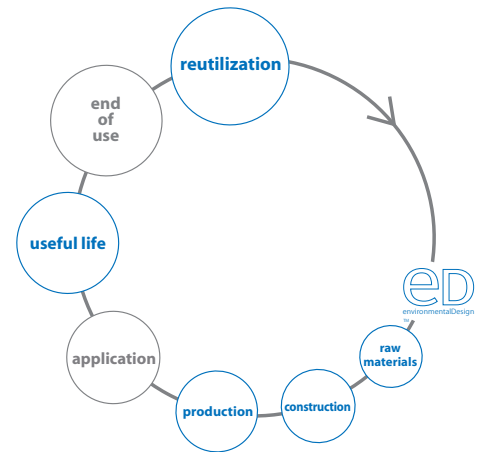


* ACT Registered Certification Marks



environmental Design

recycled ingredients
compatible for closed loop
energy use
water use
reutilization of production waste
low emitting
recyclable



There may be variation in color, texture and finish between the sample shown and the actual product.

NANO-TEX™ Resists Spills is a trademark of Nano-Tex, LLC.

©DesignTex

DesignTex
800 221 1540
www.designtex.com

A Steelcase Company

DESIGN
Tex

Faux Sure
2880

Upholstery

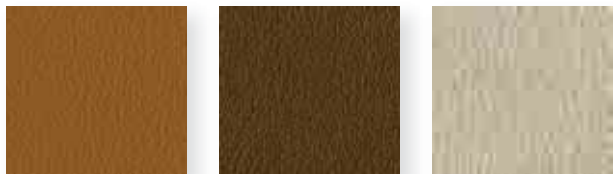
environmental Design
extreme Performance



Faux Sure
2880



2880-101 2880-102 2880-103



2880-104 2880-105 2880-106



2880-201 2880-202 2880-203



2880-301 2880-302 2880-303



2880-401 2880-402 2880-403



2880-501 2880-502 2880-601



2880-602 2880-603 2880-701



2880-801 2880-802 2880-803



2880-804

Usage	Upholstery
Width	54"
Repeat	none
Contents	100% Nylon Microfiber
Abrasion	100,000 Wire Screen
Cleaning Code	WS
Warranty	10 years

NFPA 260 (UFAC) Class I

Custom colors available through Unique Solutions.

Meets or exceeds these ACT Performance standards:

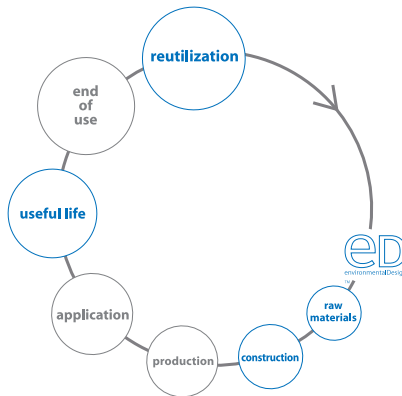


* ACT Registered Certification Marks

Passes The Collaborative for High Performance Schools Section 01350.

environmental Design

alternative to pvc
compatible for closed loop
chemically optimized
low emitting
recyclable



There may be variation in color, texture and finish between the sample shown and the actual product.

©Designtex

Designtex
800 221 1540
www.designtex.com

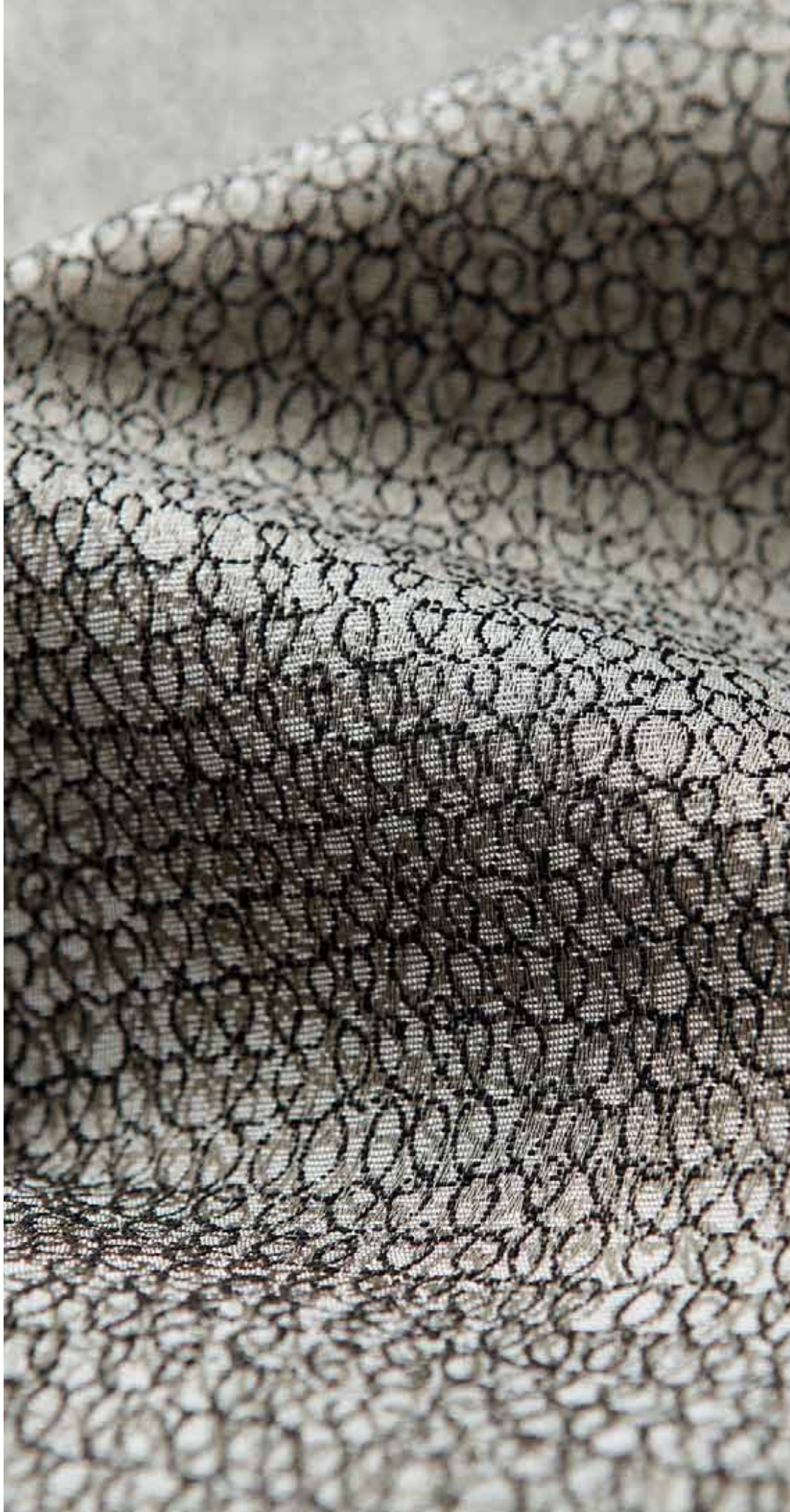
A Steelcase Company

DESIGN
Tex

Flux
3239

Upholstery

environmental Design
extreme Performance



Flux

3239



3239-101 Nougat



3239-701 Bittersweet



3239-501 Jade



3239-102 Java



3239-301 Lipstick



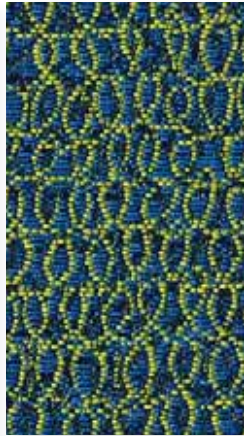
3239-502 Khaki Green



3239-801 Iron



3239-601 Phlox



3239-401 Peacock



3239-802 Ore

Usage Upholst	ery
Width 54"	
Repeat	V-7 1/4" H-5 1/4"
Finish	NanoSphere®
Backing	Acrylic
Contents	58% Polyester 42% Recycled Polyester
Abrasion	50,000 Wyzenbeek
Cleaning Code	WS
Warranty	10 years

Custom colors available through Unique Solutions.

Meets or exceeds these ACT Performance standards:



* ACT Registered Certification Marks

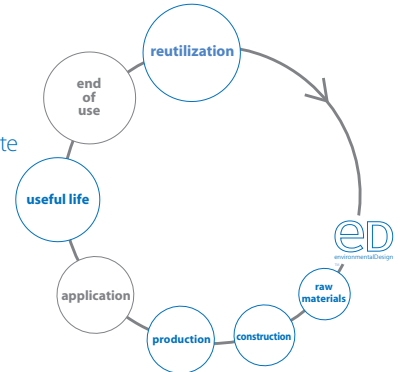


Based on environmentally optimal C6 nanotechnology, NanoSphere® offers:

- Superior stain resistance
 - Water repellent
 - Easy cleaning
 - Durable and long lasting
 - Maintains textile appearance and character
- NanoSphere technology is based on the bluesign® standard

environmental Design

recycled ingredients
compatible for closed loop
water use
reutilization of production waste
green cleaning compatible
recyclable



There may be variation in color, texture and finish between the sample shown and the actual product.

Designtex is the holder of a NanoSphere® License.

© Designtex

Designtex
800 221 1540
designtex.com

Designtex operates as a carbon neutral company

A Steelcase Company

DESIGN
Tex

Friendly Faux
2008

Upholstery

environmental Design
extreme Performance

Friendly Faux 2008



2008-101



2008-102



2008-103



2008-104



2008-105



2008-106



2008-201



2008-202



2008-301



2008-302



2008-401



2008-402



2008-403



2008-404



2008-501



2008-502



2008-503



2008-601



2008-701



2008-801

Usage	Upholstery
Width	54"
Repeat	none
Contents	100% Nylon Microfiber
Abrasion	100,000 Wire Screen
Cleaning Code	WS
Warranty	10 years

NFPA 260 (UFAC) Class I

Custom colors available through Unique Solutions.

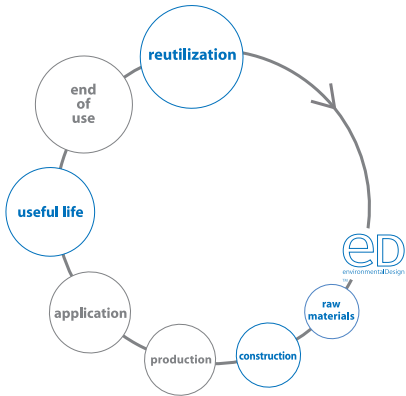
Meets or exceeds these ACT Performance standards:

* ACT Registered Certification Marks

Passes The Collaborative for High Performance Schools
Section 01350.

environmental Design

alternative to pvc
compatible for closed loop
chemically optimized
low emitting
recyclable



There may be variation in color, texture and finish
between the sample shown and the actual product.

©Designtex
Designtex
800 221 1540
www.designtex.com

A Steelcase Company

DESIGN
TEX

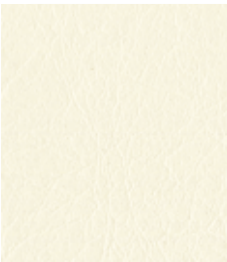
Fuse
3362

dn|aTM
UPHOLSTERY

environmental Design
extreme Performance



Fuse
3362



3362-101 Sodium



3362-201 Gold



3362-501 Zinc

Usage	Upholstery
Width	54"
Repeat	none
Contents	100% Nylon Microfiber
Abrasion	100,000 Wire Screen
Cleaning Code	WS
Warranty	10 years

Custom colors available through Unique Solutions.

Passes CHPS 01350

Meets or exceeds these ACT Performance standards:



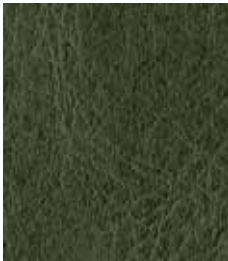
* ACT Registered Certification Marks



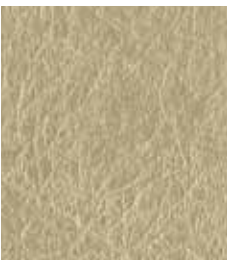
3362-102 Stone



3362-105 Bronze



3362-503 Shale



3362-103 Granite



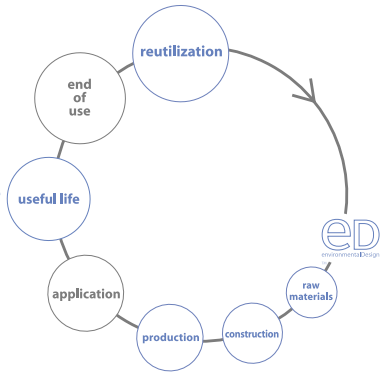
3362-701 Penny



3362-502 Mercury

environmental Design

alternative to PVC
compatible for closed loop
chemically optimized
energy use
water use
reutilization of production waste
green cleaning compatible
low emitting
recyclable



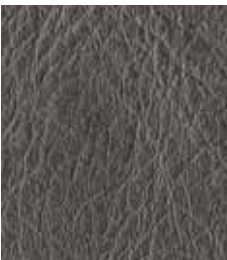
3362-104 Platinum



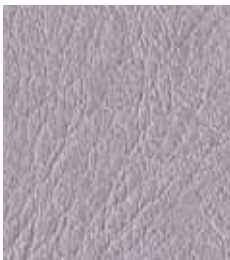
3362-301 Oxide



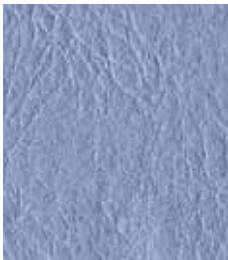
3362-801 Aluminum



3362-802 Steel



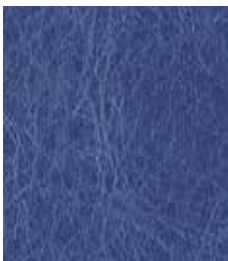
3362-601 Quartz



3362-401 Cobalt



3362-602 Titanium



3362-402 Lazulite

There may be variation in color, texture and finish between the sample shown and the actual product.

© Designtex

Designtex
800 221 1540
designtex.com

Designtex operates as a carbon neutral company

A Steelcase Company

DESIGN TEX

designed by **Tara Rae Hill**
Martiele Sineath

Garden Key
3252

Upholstery

environmental Design
extreme Performance



Garden Key

3252



3252-101 Carrara



3252-102 Tea



3252-901 Labyrinth

Usage	Upholstery
Width	54"
Repeat	V-5 1/4" H-5 1/2"
Finish	NanoSphere®
Contents	99% Post Consumer Recycled Polyester, 1% Agion®
Abrasion	50,000 Wyzenbeek
Cleaning Code	WS
Warranty	10 years

Custom colors available through Unique Solutions.

Meets or exceeds these ACT Performance standards:

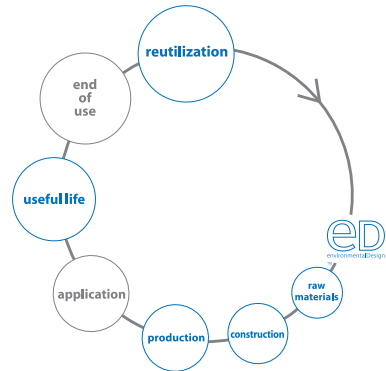


* ACT Registered Certification Marks



environmental Design

recycled ingredients
compatible for closed loop
energy use
water use
green cleaning compatible
low emitting
recyclable



3252-801 Silver Birch



3252-201 Soleil



3252-501 Lambs Ear

This product may contribute to LEED credit for Materials and Resources Credits for Recycled Content.



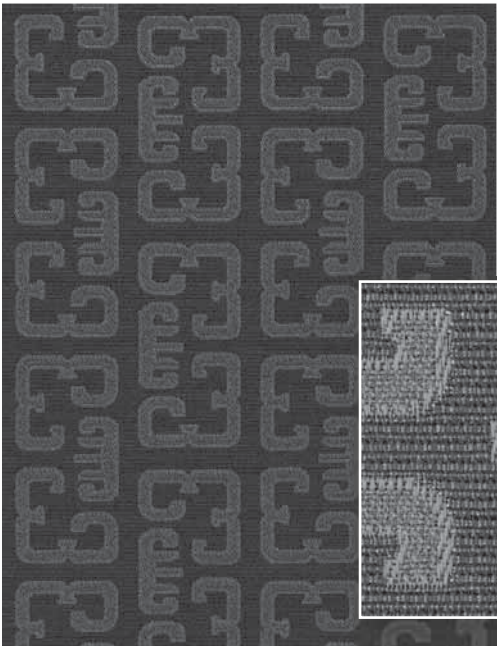
3252-103 Black Swan



3252-701 Snapdragon



3252-402 Tempest



Fabric shown full scale

There may be variation in color, texture and finish between the sample shown and the actual product.

designed by Tara Rae Hill and Martiele Sineath of LittleFISH Think Tank

© Designtex

Designtex
800 221 1540
designtex.com

Designtex operates as a carbon neutral company

A Steelcase Company

3252-601 Aubergine

3252-401 Larkspur

Note: image has been sized to represent colors

DESIGN
Tex

Journey
2684

Upholstery

environmental Design
extreme Performance



Journey
2684



2684-101



2684-102



2684-103



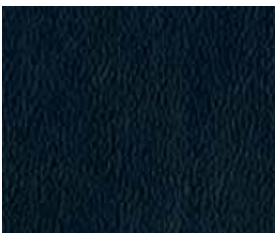
2684-301



2684-302



2684-401



2684-402



2684-403



2684-501



2684-502



2684-701



2684-801



2684-802

Usage	Upholstery
Width	54"
Repeat	none
Backing	Non-Woven
Contents	59% Polyurethane 41% Nylon
Abrasion	100,000 Wire Screen
Cleaning Code	WS
Warranty	10 years

NFPA 260 (UFAC) Class I

Custom colors available through Unique Solutions.

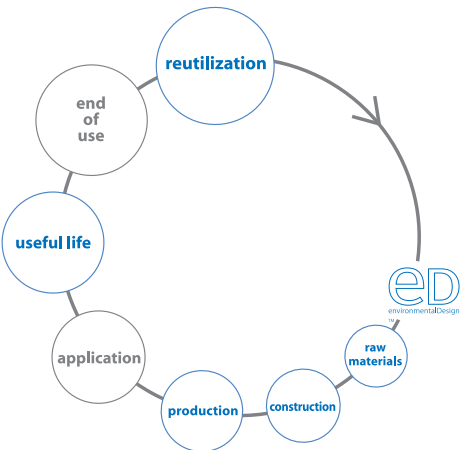
Meets or exceeds these ACT Performance standards:



* ACT Registered Certification Marks

environmental Design

alternative to pvc
compatible for closed loop
chemically optimized
energy use
water use
reutilization of production waste
low emitting
recyclable



There may be variation in color, texture and finish between the sample shown and the actual product.

©Designtex

Designtex
800 221 1540
www.designtex.com

A Steelcase Company

DESIGN
TEX

Kenaf
2859

Upholstery

environmental Design
extreme Performance



Kenaf 2859



2859-301



2859-401



2859-501



2859-701



2859-901



2859-902



2859-903



2859-904



2859-905



2859-906

Note: image has been sized to represent all colors

Usage	Upholstery
Width	54"
Repeat	V-2 1/4" H-2 1/2"
Finish	Crypton® Green
Contents	100% Recycled Polyester
Abrasion	90,000 Wyzenbeek
Cleaning Code	W (Crypton Method)
Warranty	10 years

NFPA 260 (UFAC) Class I

Custom colors available through Unique Solutions.

Meets or exceeds these ACT Performance standards:

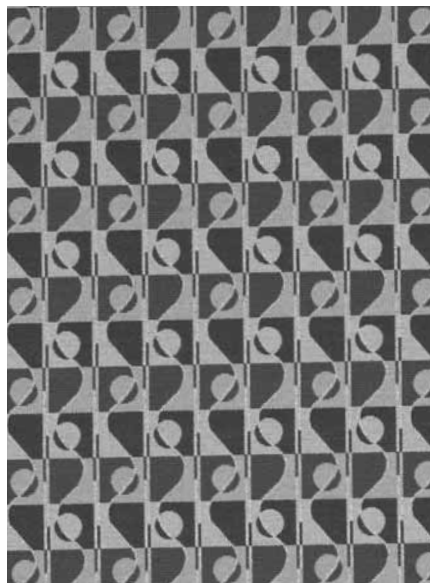
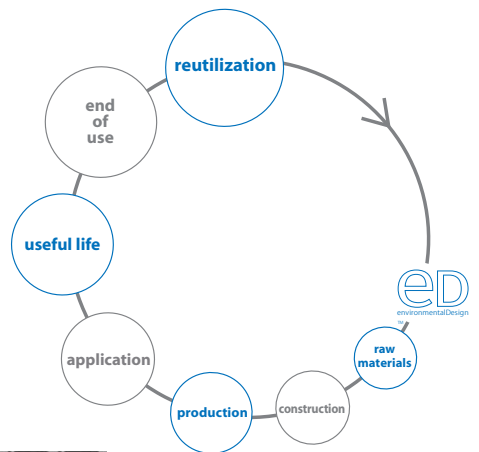


* ACT Registered Certification Marks



environmental Design

recycled ingredients
energy use
water use
reutilization of production waste
low emitting
recyclable



There may be variation in color, texture and finish between the sample shown and the actual product.

©Designtex

Designtex
800 221 1540
www.designtex.com

A Steelcase Company

DESIGN
TEX

Line Item
2659

Upholstery

environmental Design
extreme Performance



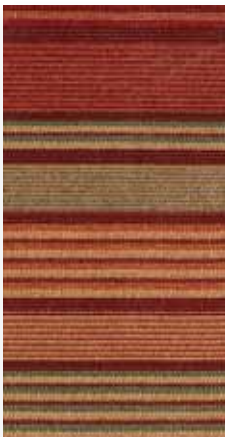
Line Item
2659



2659-101



2659-102



2659-301



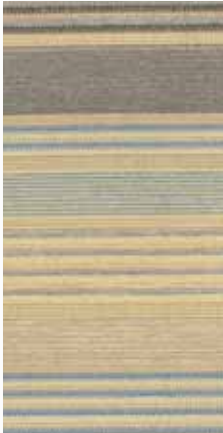
2659-501



2659-502



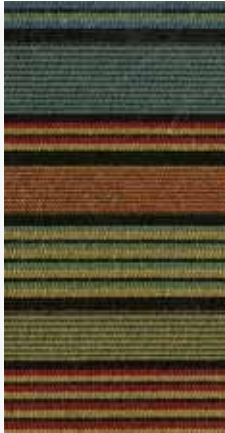
2659-701



2659-801



2659-802



2659-901

Usage	Upholstery
Width	54"
Repeat	V-5 1/2" H-1"
Finish	Teflon®
Backing	Acrylic
Contents	100% Solution Dyed Nylon
Abrasion	100,000 Wyzenbeek
Cleaning Code	WS
Warranty	10 years

Custom colors available through Unique Solutions.

Meets or exceeds these ACT Performance standards:

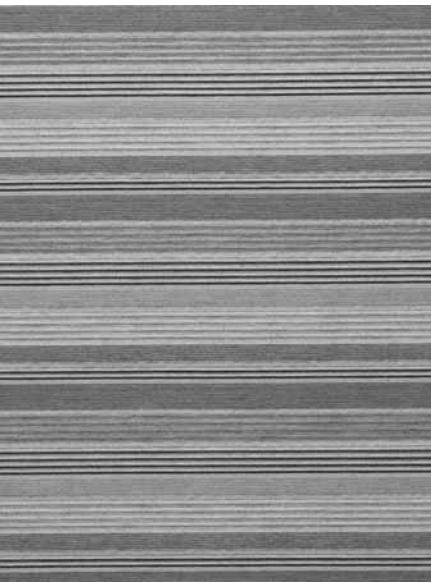
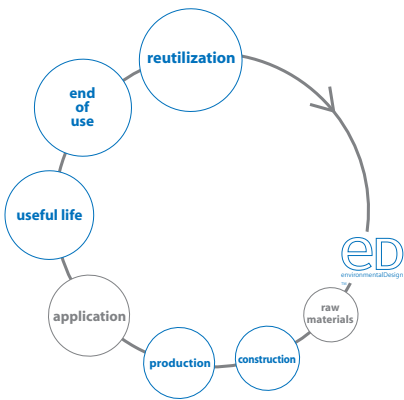


* ACT Registered Certification Marks



environmental Design

compatible for closed loop
water use
reutilization of production waste
low emitting
take back program
recyclable



There may be variation in color, texture and finish between the sample shown and the actual product.

©Designtex

Designtex
800 221 1540
www.designtex.com

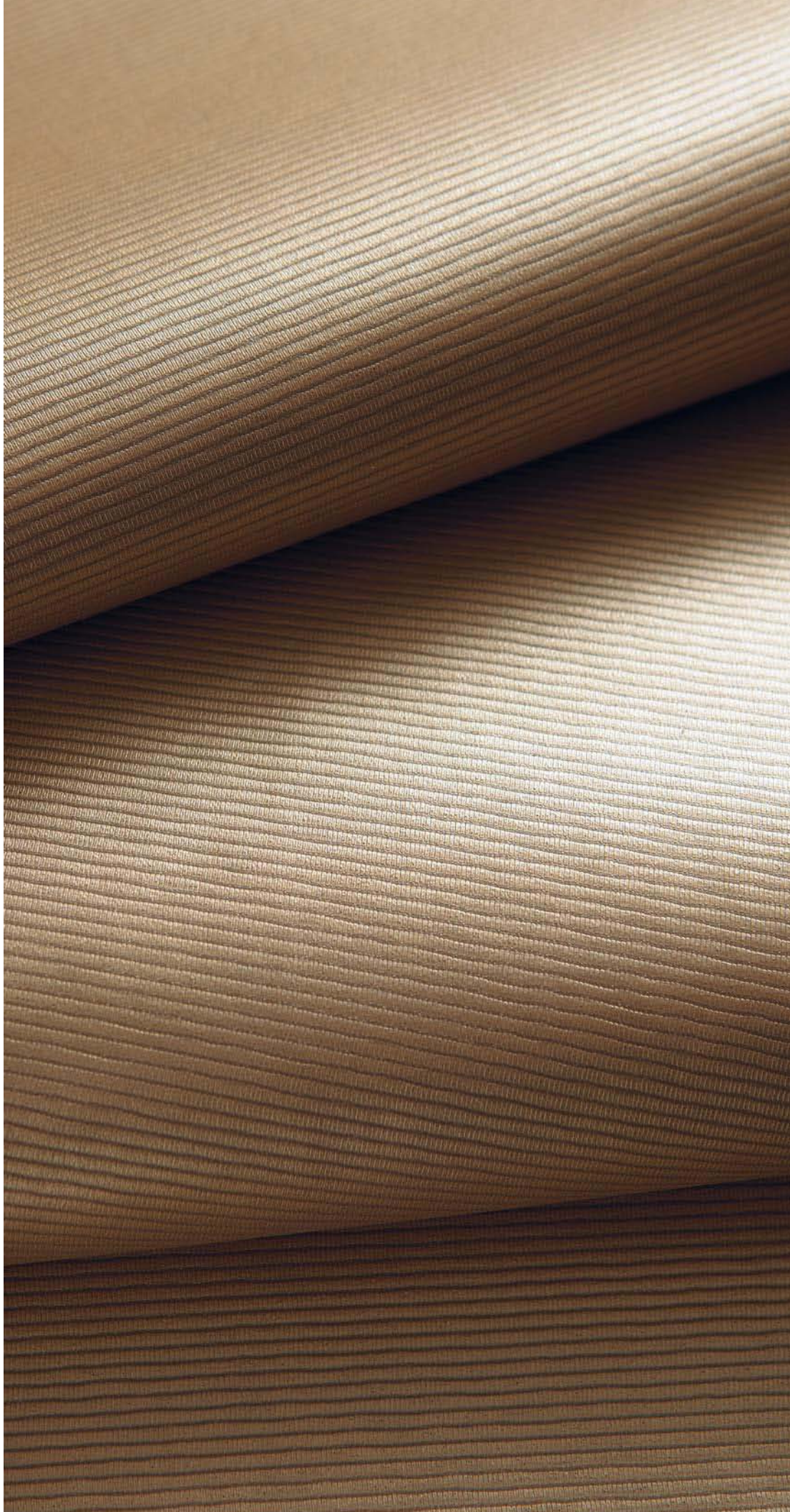
A Steelcase Company

DESIGN
Tex

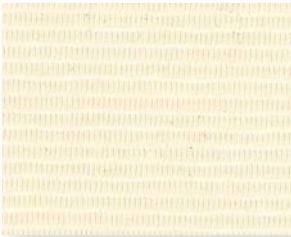
Metamorphosis
3241

Upholstery

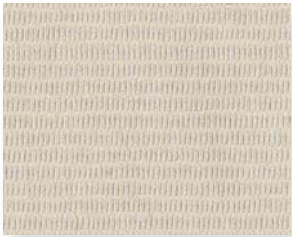
environmental Design
extreme Performance



Metamorphosis
3241



3241-101 Snow



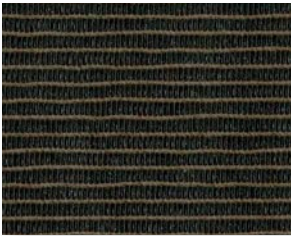
3241-801 Platinum



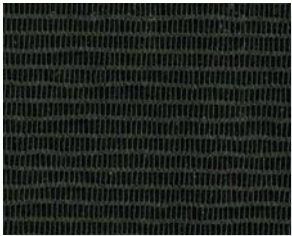
3241-102 Brushed Metal



3241-802 Granite



3241-103 Tortoise



3241-803 Ebony

Usage Upholstery	
Width 54"	
Repeat	none
Contents	100% Nylon Microfiber
Abrasion	100,000 Wyzenbeek
Cleaning Code	WS
Warranty	10 years

Custom colors available through Unique Solutions.

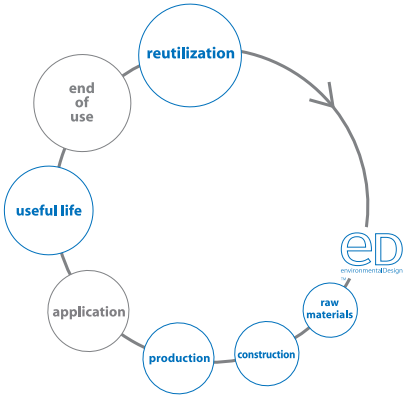
Meets or exceeds these ACT Performance standards:



* ACT Registered Certification Marks

environmental Design

alternative to pvc
compatible for closed loop
chemically optimized
energy use
water use
reutilization of production waste
green cleaning compatible
low emitting
recyclable



There may be variation in color, texture and finish
between the sample shown and the actual product.

© Designtex

Designtex
800 221 1540
designtex.com

Designtex operates as a carbon neutral company
A Steelcase Company

DESIGN
Tex

Migration
3246

Upholstery

environmental Design
extreme Performance



Migration
3246



3246-101 Shell



3246-102 Almond



3246-103 Gold Leaf



3246-105 Toffee



3246-104 Harvest



3246-106 Espresso



3246-801 Oyster



3246-802 Stone



3246-401 Slate



3246-803 Iron



3246-601 Plum



3246-602 Boysenberry

Usage Upholst	ery
Width 54"	
Repeat	none
Contents	100% Nylon Microfiber
Abrasion	100,000 Wyzenbeek
Cleaning Code	WS
Warranty	10 years

Custom colors available through Unique Solutions.

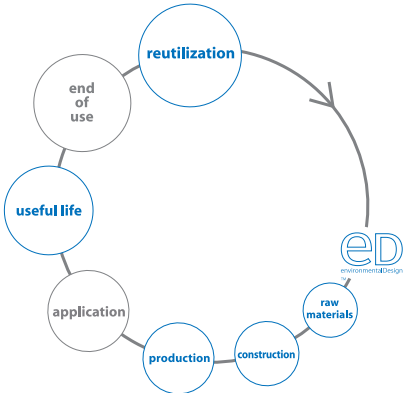
Meets or exceeds these ACT Performance standards:



* ACT Registered Certification Marks

environmental Design

alternative to pvc
compatible for closed loop
chemically optimized
energy use
water use
reutilization of production waste
green cleaning compatible
low emitting
recyclable



There may be variation in color, texture and finish between the sample shown and the actual product.

© Designtex

Designtex
800 221 1540
designtex.com

Designtex operates as a carbon neutral company
A Steelcase Company

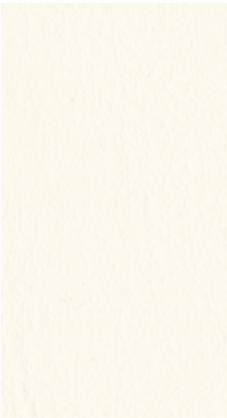
DESIGN
TEX

Passage
3364

dn|a
UPHOLSTERY

environmental Design
extreme Performance

Passage
3364



3364-101 Flurry



3364-201 Honey



3364-501 Parrot



3364-102 Porcini



3364-701 Copper



3364-502 Willow



3364-103 Pepper



3364-301 Rouge



3364-402 Eucalyptus



3364-801 Black Tie



3364-104 Chocolate



3364-401 Jaybird

Usage	Upholstery
Width	54"
Repeat	none
Backing	Post Consumer Recycled Polyester
Contents	80% Recycled Polyester, 20% Polyurethane face
Abrasion	100,000+ Wire Screen
Cleaning Code	WS
Warranty	10 years

Custom colors available through Unique Solutions.

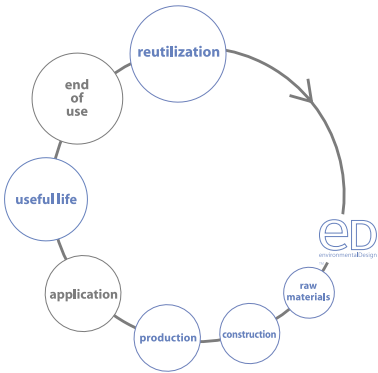
Passes CHPS 01350

This product may contribute to LEED Materials and Resources Credit for Recycled Content.

Meets or exceeds these ACT Performance standards:



recycled ingredients
alternative to PVC
chemically optimized
water use
low emitting
waste to fuel



There may be variation in color, texture and finish between the sample shown and the actual product.

© Designtex
Designtex
800 221 1540
designtex.com

Designtex operates as a carbon neutral company
A Steelcase Company

DESIGN
TEX

Pueblo
2844

Upholstery

environmental Design
extreme Performance



Pueblo
2844



2844-101



2844-102



2844-103



2844-401



2844-402



2844-501



2844-502



2844-601



2844-701



2844-702

Usage	Upholstery
Width	54"
Repeat	none
Finish	Crypton® Green
Contents	100% Recycled Polyester
Abrasion	100,000 Wyzenbeek
Cleaning Code	W (Crypton Method)
Warranty	10 years

NFPA 260 (UFAC) Class I

Custom colors available through Unique Solutions.

Meets or exceeds these ACT Performance standards:

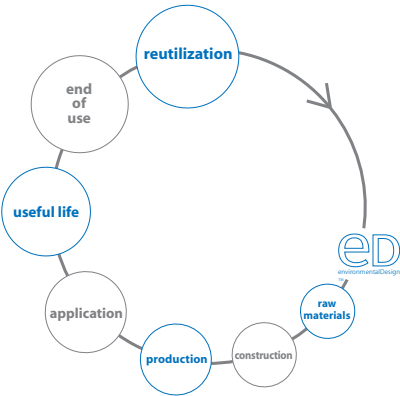


* ACT Registered Certification Marks



environmental Design

recycled ingredients
energy use
water use
reutilization of production waste
low emitting
recyclable



There may be variation in color, texture and finish between the sample shown and the actual product.

©Designtex

Designtex
800 221 1540
www.designtex.com

A Steelcase Company

DESIGN
Tex

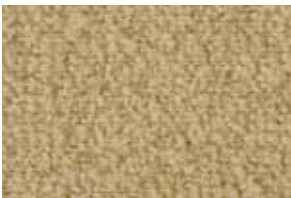
Quintessence
3347

Upholstery

environmental Design
extreme Performance



Quintessence
3347



3347-101



3347-102



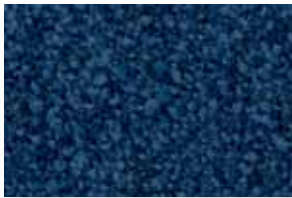
3347-103



3347-201



3347-301



3347-401



3347-402



3347-403



3347-404



3347-501



3347-502



3347-601



3347-701



3347-801



3347-802

Usage	Upholstery
Width	54"
Repeat	none
Finish	Crypton® Green
Contents	100% Recycled Polyester
Abrasion	60,000 Wyzenbeek
Cleaning Code	W (Crypton Method)
Warranty	10 years

Custom colors available through Unique Solutions.

Meets or exceeds these ACT Performance standards:

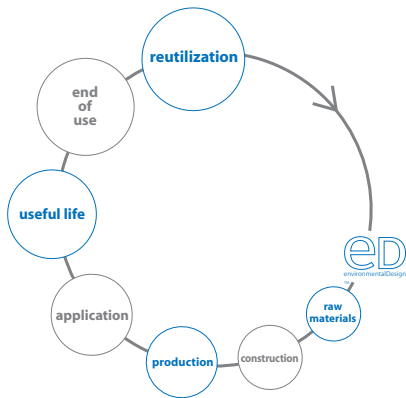


* ACT Registered Certification Marks



environmental Design

recycled ingredients
energy use
water use
reutilization of production waste
low emitting
recyclable



There may be variation in color, texture and finish
between the sample shown and the actual product.

©DesignTex

DesignTex
800 221 1540
www.designtex.com

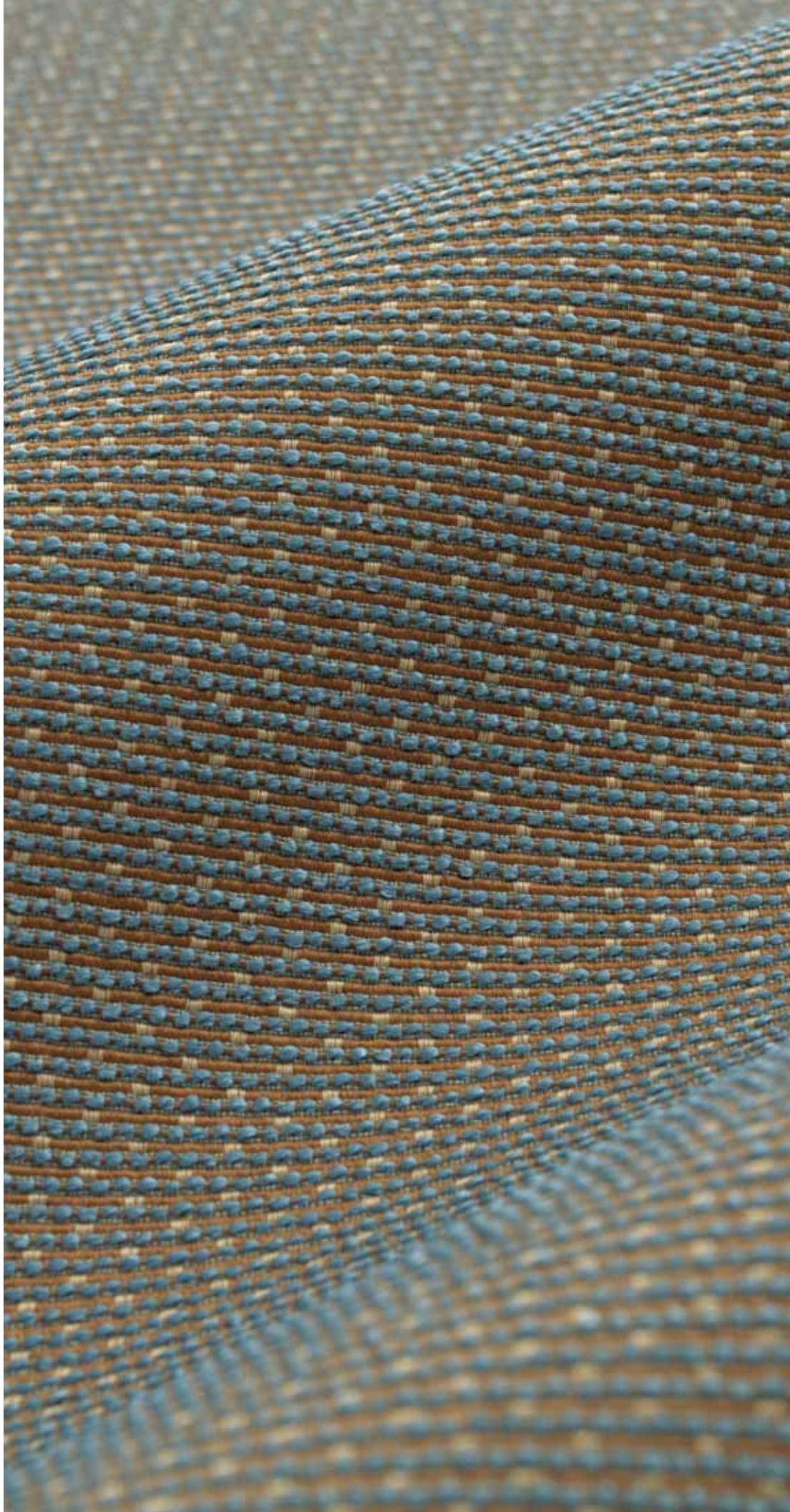
A Steelcase Company

DESIGN
Tex

Rice
2858

Upholstery

environmental Design
extreme Performance



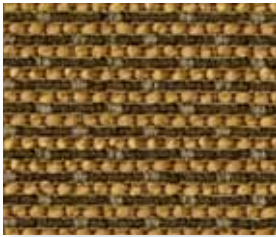
Rice
2858



2858-101



2858-102



2858-201



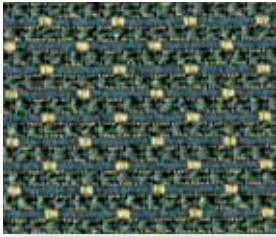
2858-301



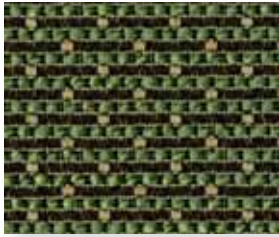
2858-401



2858-402



2858-403



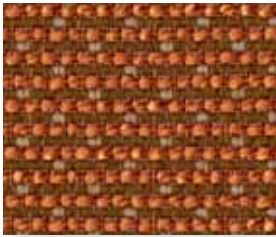
2858-501



2858-601



2858-701



2858-702



2858-901



2858-902

Usage	Upholstery
Width	54"
Repeat	V-1/4" H-1/4"
Finish	Crypton® Green
Contents	100% Recycled Polyester
Abrasion	80,000 Wyzenbeek
Cleaning Code	W (Crypton Method)
Warranty	10 years

NFPA 260 (UFAC) Class 1

Custom colors available through Unique Solutions.

Meets or exceeds these ACT Performance standards:

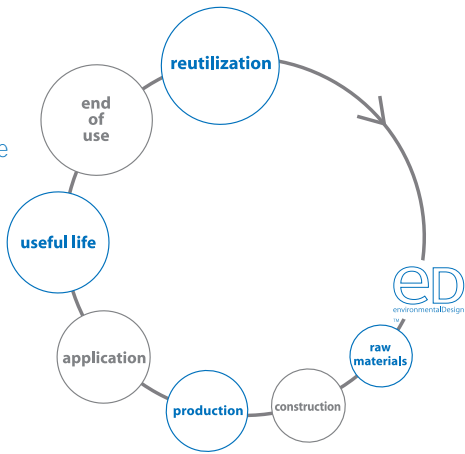


* ACT Registered Certification Marks



environmental Design

recycled ingredients
energy use
water use
reutilization of production waste
low emitting
recyclable



There may be variation in color, texture and finish
between the sample shown and the actual product.

©Designtex

Designtex
800 221 1540
www.designtex.com

A Steelcase Company

DESIGN
Tex

Rocket
2693

Upholstery

environmental Design
extreme Performance



Rocket
2693



Usage	Upholstery
Width	54"
Repeat	none
Finish	NANO-TEX™ Resists Spills
Contents	73% Recycled Polyester
	27% Polyester
Abrasion	100,000+ Wyzenbeek
Cleaning Code	WS
Warranty	10 years

Custom colors available through Unique Solutions.

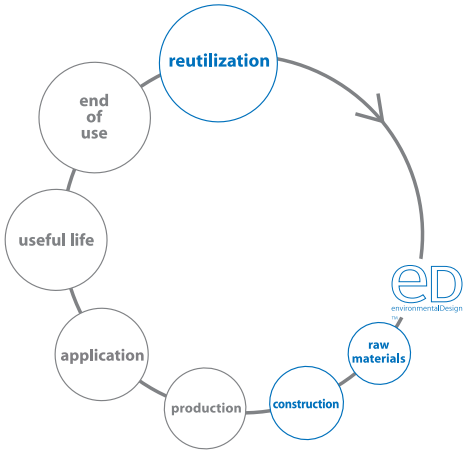
Meets or exceeds these ACT Performance standards:



* ACT Registered Certification Marks



environmental Design
recycled ingredients
compatible for closed loop
recyclable



There may be variation in color, texture and finish between the sample shown and the actual product.

NANO-TEX™ Resists Spills is a trademark of Nano-Tex, LLC.

©Designtex
Designtex
800 221 1540
www.designtex.com

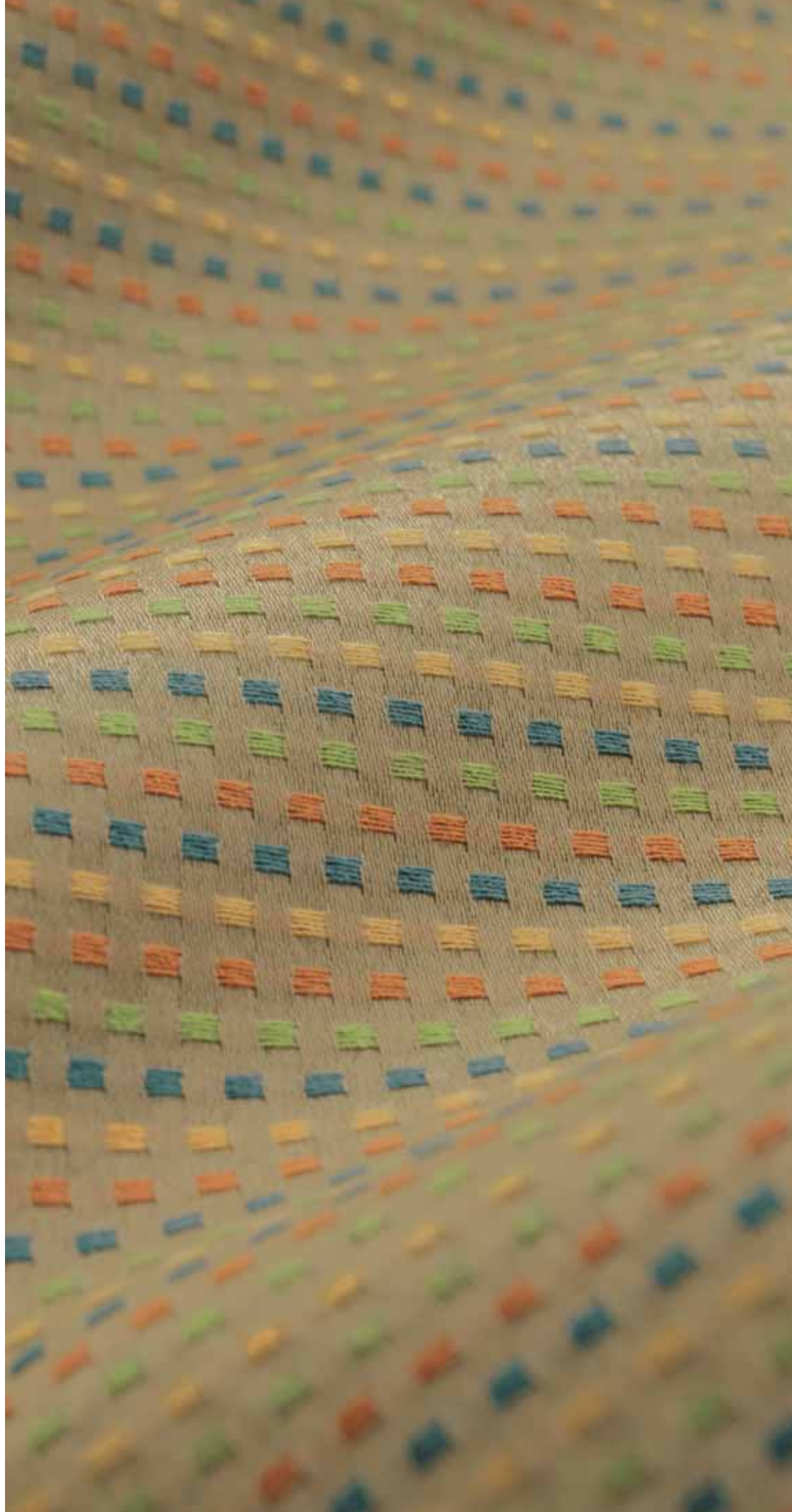
A Steelcase Company

DESIGN
TEX

Seed
2839

Upholstery

environmental Design
extreme Performance



Seed
2839



2839-101



2839-301



2839-401



2839-402



2839-501



2839-601



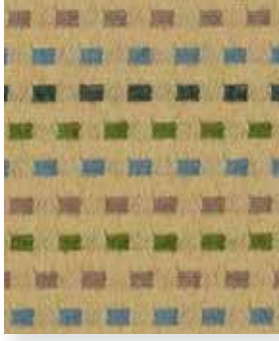
2839-701



2839-801



2839-901



2839-902

Usage	Upholstery
Width	54"
Repeat	V-6 1/4" H-1/4"
Finish	Crypton® Green
Contents	100% Recycled Polyester
Abrasion	60,000 Wyzenbeek
Cleaning Code	W (Crypton Method)
Warranty	10 years

NFPA 260 (UFAC) Class 1

Custom colors available through Unique Solutions.

Meets or exceeds these ACT Performance standards:

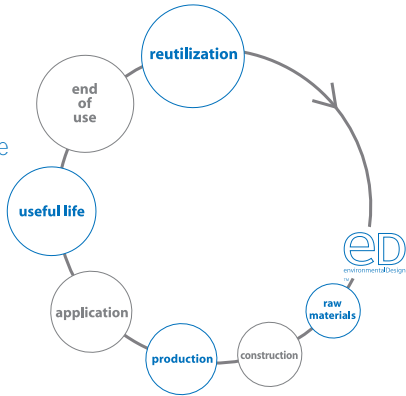


* ACT Registered Certification Marks



environmental Design

recycled ingredients
energy use
water use
reutilization of production waste
low emitting
recyclable



There may be variation in color, texture and finish between the sample shown and the actual product.

©Designtex

Designtex
800 221 1540
www.designtex.com

A Steelcase Company

DESIGN
TEX

Senna
2848

Upholstery

environmental Design
extreme Performance

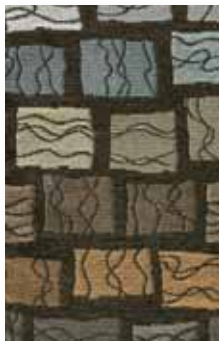


Senna

2848



2848-101



2848-102



2848-401



2848-501



2848-502



2848-601



2848-602



2848-701



2848-901

Usage	Upholstery
Width	54"
Repeat	V-8 3/4" H-5 1/4"
Finish	NANO-TEX™ Resists Spills
Backing	Acrylic
Contents	100% Solution Dyed Nylon
Abrasion	100,000 Wyzenbeek
Cleaning Code	WS
Warranty	10 years

Custom colors available through Unique Solutions.

Meets or exceeds these ACT Performance standards:

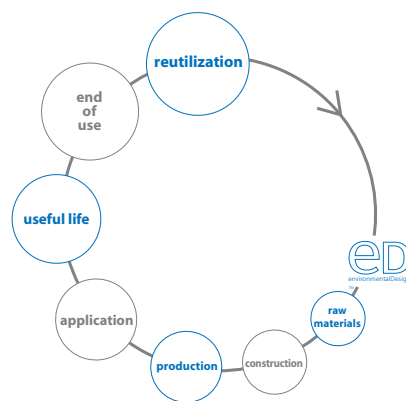


* ACT Registered Certification Marks



environmental Design

compatible for closed loop
water use
reutilization of production waste
low emitting
take back program
recyclable



There may be variation in color, texture and finish between the sample shown and the actual product.

NANO-TEX™ Resists Spills is a trademark of Nano-Tex, LLC.

©DesignTex

DesignTex
800 221 1540
www.designtex.com

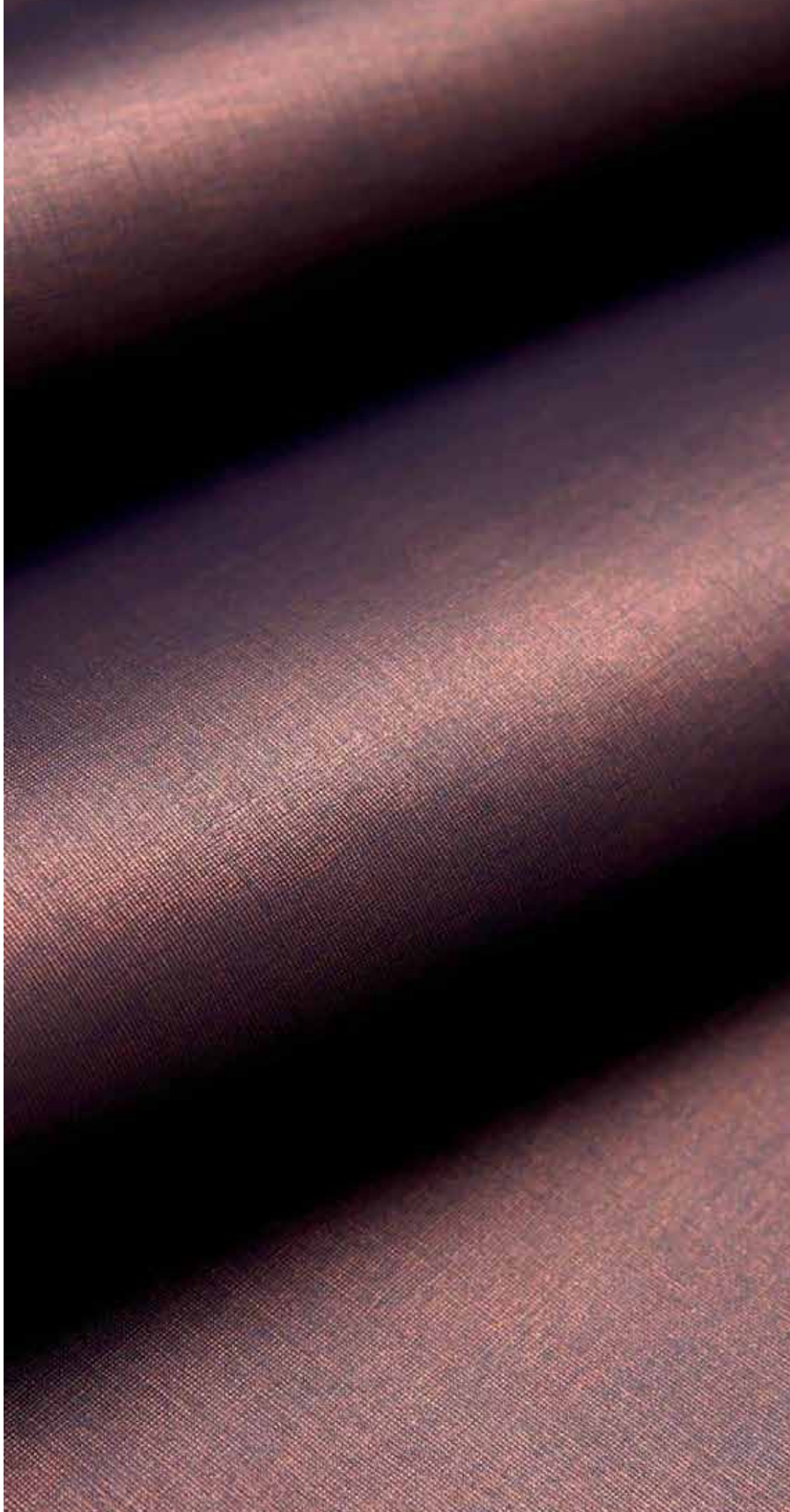
A Steelcase Company

DESIGN
Tex

Shimmering Tide
3242

Upholstery

environmental Design
extreme Performance



Shimmering Tide

3242



3242-101 Oyster



3242-801 Pebble



3242-104 Copper Beach



3242-301 Red Reef



3242-601 Sea Plum



3242-106 Driftwood



3242-105 Lava



3242-102 Sand



3242-103 Pearl



3242-802 Sharkskin



3242-401 Lake



3242-402 Ocean



3242-501 Lagoon

Usage	Upholstery
Width	54"
Repeat	none
Contents	100% Nylon Microfiber
Abrasion	100,000 Wyzenbeek
Cleaning Code	WS
Warranty	10 years

Custom colors available through Unique Solutions.

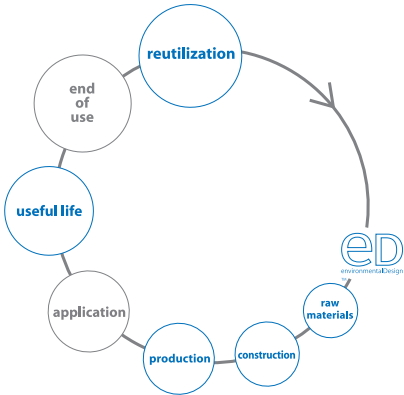
Meets or exceeds these ACT Performance standards:



* ACT Registered Certification Marks

environmental Design

alternative to pvc
compatible for closed loop
chemically optimized
energy use
water use
reutilization of production waste
green cleaning compatible
low emitting
recyclable



There may be variation in color, texture and finish between the sample shown and the actual product.

© Designtex

Designtex
800 221 1540
designtex.com

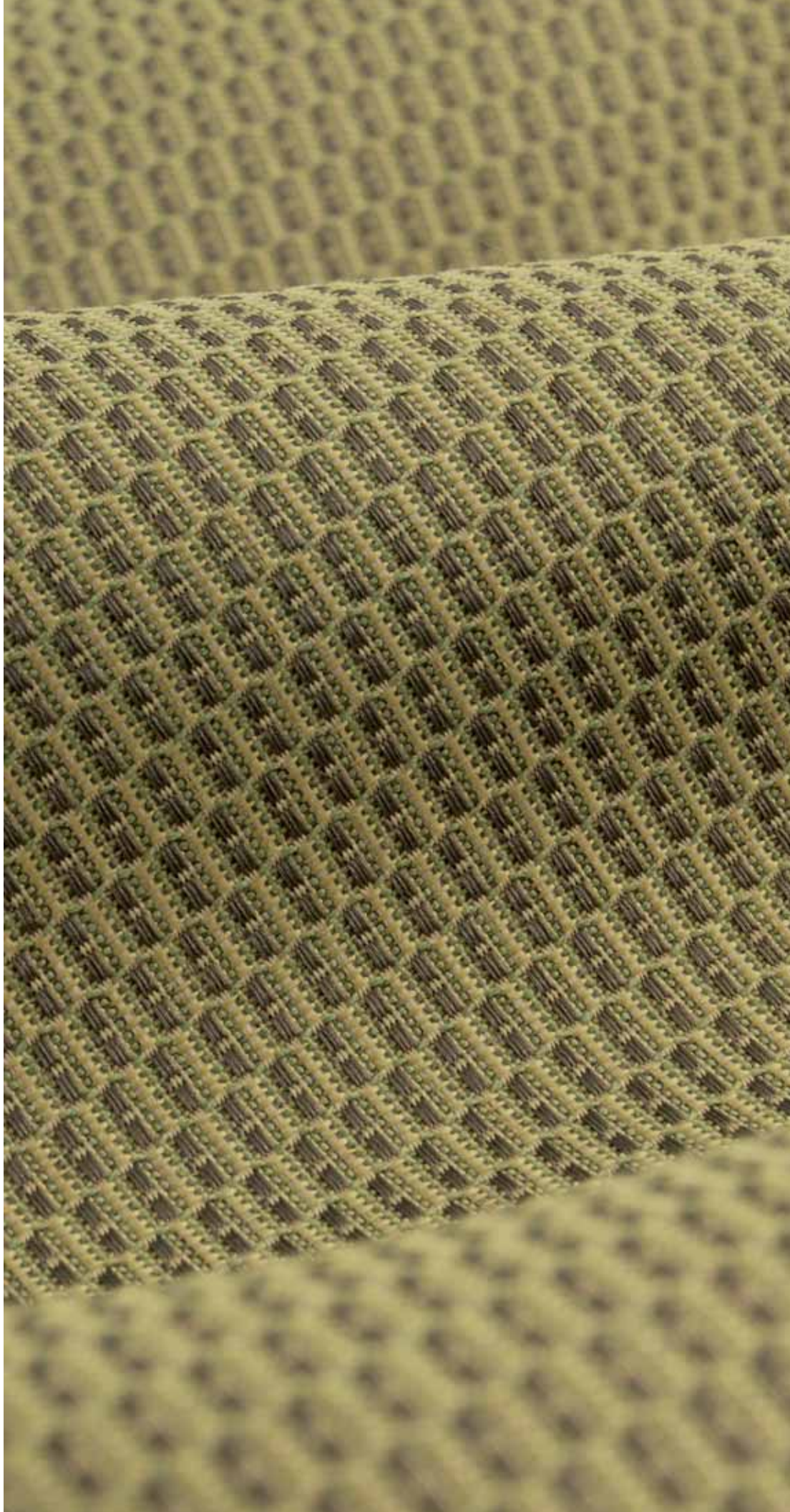
Designtex operates as a carbon neutral company
A Steelcase Company

DESIGN
Tex

Skylark
2732

Upholstery

environmental Design
extreme Performance



Skylark

2732



2732-101



2732-102



2732-301



2732-401



2732-402



2732-501



2732-502



2732-601



2732-701



2732-801

Usage	Upholstery
Width	60"
Repeat	none
Finish	NANO-TEX™ Resists Spills
Contents	100% Recycled Polyester
Abrasion	60,000 Wyzenbeek
Cleaning Code	WS
Warranty	10 years

Custom colors available through Unique Solutions.

Meets or exceeds these ACT Performance standards:



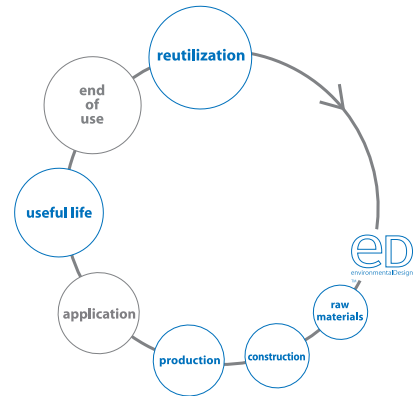
* ACT Registered Certification Marks



This product has been certified for its material content, recyclability, and manufacturing characteristics. c2ccertified.com

environmental Design

recycled ingredients
compatible for closed loop
energy use
water use
reutilization of production waste
low emitting
recyclable



There may be variation in color, texture and finish between the sample shown and the actual product.

NANO-TEX™ Resists Spills is a trademark of Nano-Tex, LLC.

©DesignTex

DesignTex
800 221 1540
www.designtex.com

A Steelcase Company

DESIGN
Tex

Soothe
2769

Upholstery

environmental Design
extreme Performance



Soothe

2769



2769-101



2769-401



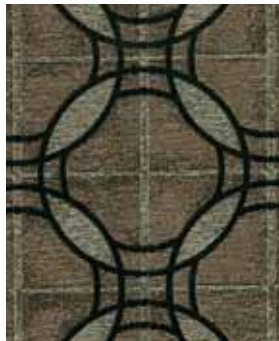
2769-601



2769-701



2769-702



2769-801



2769-901



2769-902



2769-903



2769-904

Note: image has been sized to represent all colors

Usage	Upholstery
Width	54"
Repeat	V-9 3/4" H-5 1/4"
Finish	NANO-TEX™ Resists Spills
Backing	Acrylic
Contents	100% Solution Dyed Nylon
Abrasion	90,000 Wyzenbeek
Cleaning Code	WS
Warranty	10 years

NFPA 260 (UFAC) Class I

Custom colors available through Unique Solutions.

Meets or exceeds these ACT Performance standards:

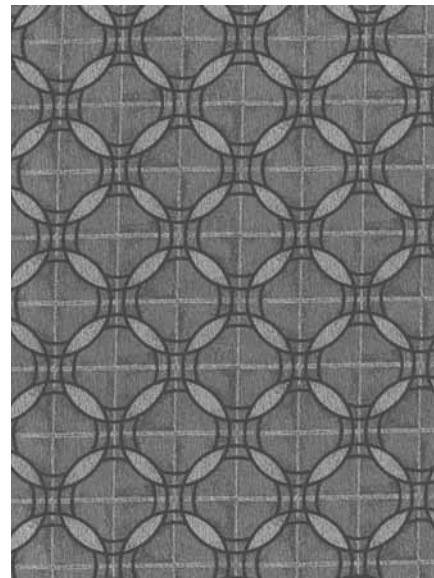
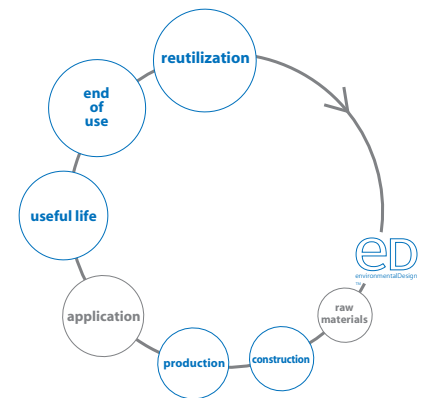


* ACT Registered Certification Marks



environmental Design

compatible for closed loop
water use
reutilization of production waste
low emitting
take back program
recyclable



There may be variation in color, texture and finish between the sample shown and the actual product.

NANO-TEX™ Resists Spills is a trademark of Nano-Tex, LLC.

©DesignTex

DesignTex
800 221 1540
www.designtex.com

A Steelcase Company

DESIGN
Tex

Southside
3302

Upholstery

environmental Design
extreme Performance



Southside
3302



3302-101



3302-102



3302-103



3302-201



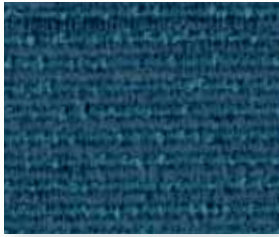
3302-301



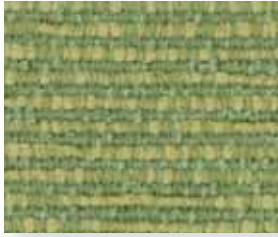
3302-302



3302-401



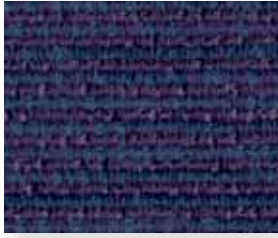
3302-402



3302-501



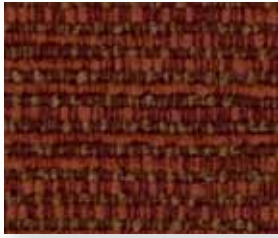
3302-502



3302-601



3302-701



3302-702

Usage	Upholstery
Width	54"
Repeat	none
Finish	Crypton® Green
Contents	65% Recycled Polyester 35% Polyester
Abrasion	50,000 Wyzenbeek
Cleaning Code	W (Crypton Method)
Warranty	10 years

NFPA 260 (UFAC) Class 1

Custom colors available through Unique Solutions.

Meets or exceeds these ACT Performance standards:

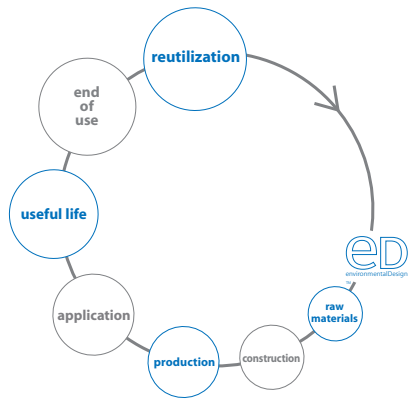


* ACT Registered Certification Marks



environmental Design

recycled ingredients
energy use
water use
reutilization of production waste
low emitting
recyclable



There may be variation in color, texture and finish between the sample shown and the actual product.

©Designtex

Designtex
800 221 1540
www.designtex.com

A Steelcase Company

DESIGN
TEX

Stacks
2658

Upholstery

environmental Design
extreme Performance



Stacks
2658



2658-101



2658-102



2658-301



2658-401



2658-501



2658-601



2658-701



2658-901



2658-902

Usage	Upholstery
Width	54"
Repeat	V-5 1/4" H-2 3/4"
Finish	Teflon®
Backing	Acrylic
Contents	100% Solution Dyed Nylon
Abrasion	100,000 Wyzenbeek
Cleaning Code	WS
Warranty	10 years

Custom colors available through Unique Solutions.

Meets or exceeds these ACT Performance standards:

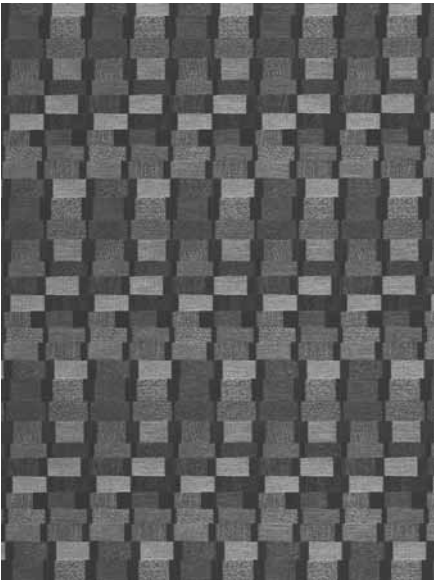
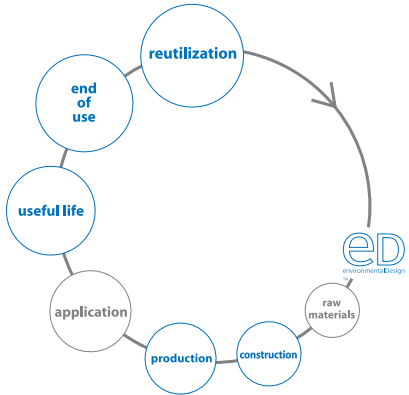


* ACT Registered Certification Marks



environmental Design

compatible for closed loop
water use
reutilization of production waste
low emitting
take back program
recyclable



There may be variation in color, texture and finish between the sample shown and the actual product.

©DesignTex

DesignTex
800 221 1540
www.designtex.com

A Steelcase Company

Note: image has been sized to represent all colors

DESIGN Tex

designed by **Tara Rae Hill**
Martiele Sineath

Sugar Shoots
3247

Upholstery

environmental Design
extreme Performance



Sugar Shoots

3247



3247-101 Carrara



3247-202 Soleil



3247-201 Lemongrass

Usage	Upholstery
Width	54"
Repeat	V-10 3/4" H-5 1/4"
Finish	Stain Repellent
Backing	Acrylic
Contents	100% Solution Dyed Nylon
Abrasion	100,000+ Wyzenbeek
Cleaning Code	WS
Warranty	10 years

Custom colors available through Unique Solutions.

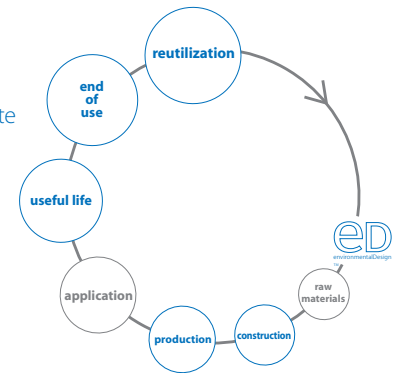
Meets or exceeds these ACT Performance standards:



* ACT Registered Certification Marks

environmental Design

compatible for closed loop
water use
reutilization of production waste
green cleaning compatible
low emitting
take back program
recyclable



3247-102 Tea



3247-601 Aubergine



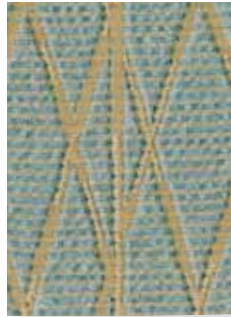
3247-501 Celadon



3247-801 Wisteria



3247-701 Snapdragon



3247-401 Labyrinth



3247-802 Silver Birch



3247-301 Framboise



3247-402 Bleu

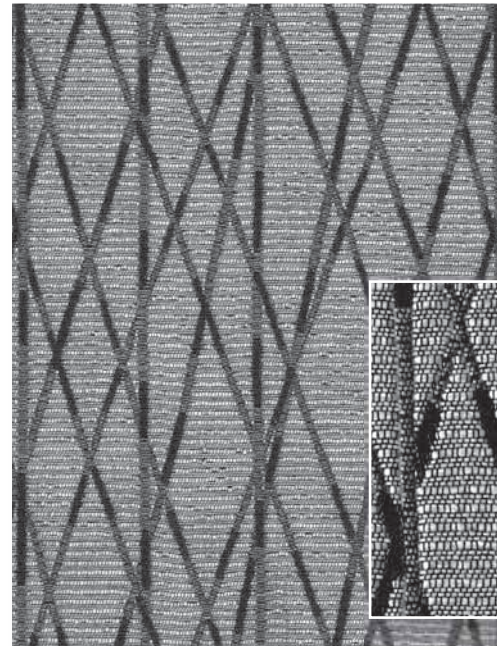


3247-803 Black Swan



3247-403 Larkspur

Note: image has been sized to represent colors



Fabric shown full scale

There may be variation in color, texture and finish between the sample shown and the actual product.

designed by Tara Rae Hill and Martie Sineath of LittleFISH Think Tank

© DesignTex

DesignTex
800 221 1540
designtex.com

DesignTex operates as a carbon neutral company

A Steelcase Company

DESIGN
TEX

Synthesis
3382

Upholstery

environmental Design
extreme Performance

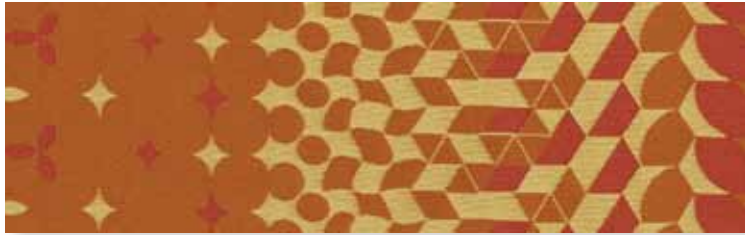


Synthesis

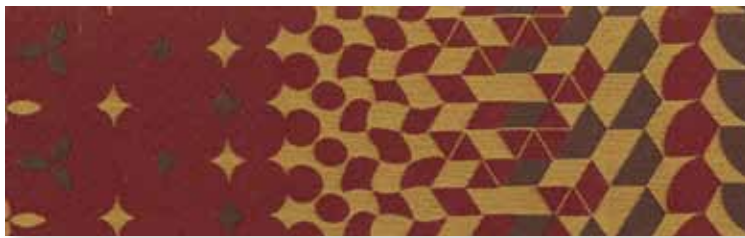
3382



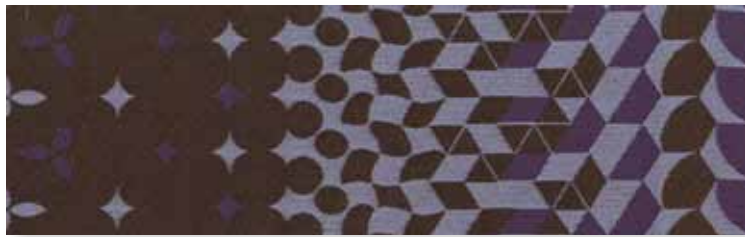
3382-101 Stone



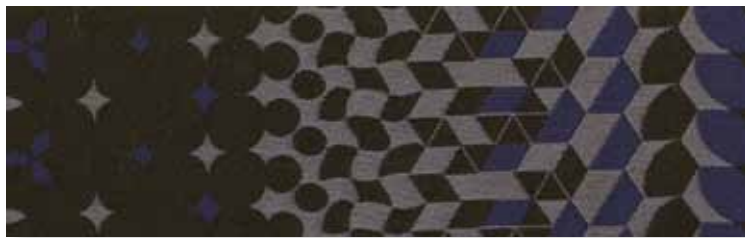
3382-701 Clementine



3382-901 Raisin



3382-601 Plum



3382-401 Midnight



3382-501 Peridot



3382-801 Charcoal

Note: image has been sized to represent colors

Usage	Upholstery
Width	55"
Repeat	V-2" H-27"
Finish	Greenshield®
Contents	100% Eco Intelligent Polyester
Abrasion	50,000 Wyzenbeek
Cleaning Code	WS
Warranty	10 years

Custom colors available through Unique Solutions.

Meets or exceeds these ACT Performance standards:

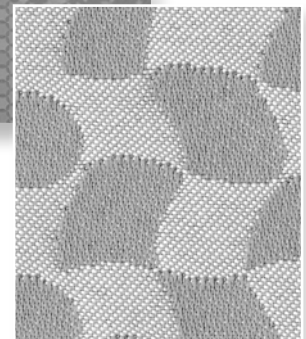
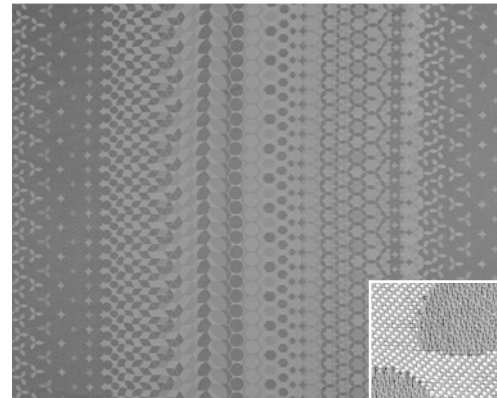
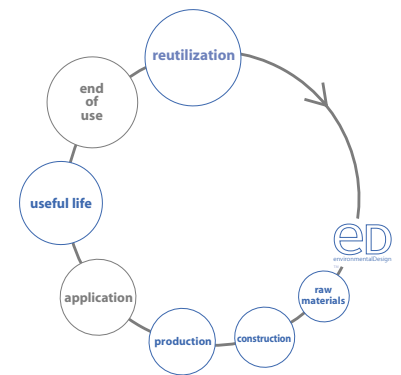


* ACT Registered Certification Marks



environmental Design

antimony-free catalyst
compatible for closed loop
chemically optimized
energy use
water use
green cleaning compatible
low emitting
recyclable



Fabric shown full scale

There may be variation in color, texture and finish between the sample shown and the actual product.

© Designtex

Designtex
800 221 1540
designtex.com

Designtex operates as a carbon neutral company

A Steelcase Company



DESIGN
Tex

Tartan
2994

Upholstery

environmental Design
extreme Performance



Tartan

2994



2994-101



2994-301



2994-302



2994-401



2994-501



2994-502



2994-701



2994-901



2994-902



2994-903

Usage	Upholstery
Width	55"
Repeat	V-8 3/4" H-7 1/4"
Finish	Crypton® Green
Contents	52% Recycled Polyester
	48% Polyester
Abrasion	100,000 Wyzenbeek
Cleaning Code	W
Warranty	10 years

Fabric shown railroaded.

NFPA 260 (UFAC) Class I

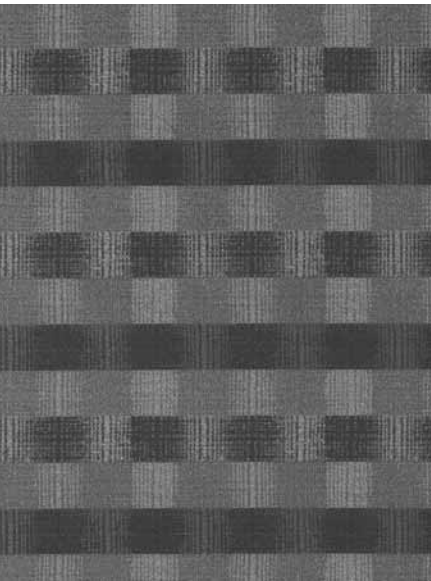
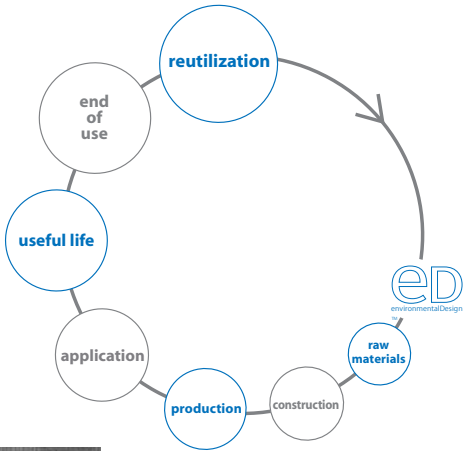
Custom colors available through Unique Solutions.

Meets or exceeds these ACT Performance standards:



environmental Design

recycled ingredients
energy use
water use
reutilization of production waste
low emitting
recyclable



There may be variation in color, texture and finish between the sample shown and the actual product.

©Designtex
Designtex
800 221 1540
www.designtex.com

A Steelcase Company

Note: image has been sized to represent all colors

DESIGN
TEX

Terrain
2846

Upholstery

environmental Design
extreme Performance



Terrain

2846



2846-101



2846-102



2846-201



2846-301



2846-401



2846-901



2846-902

Usage	Upholstery
Width	54"
Repeat	V-12" H-none
Finish	Crypton® Green
Contents	100% Recycled Polyester
Abrasion	100,000 Wyzenbeek
Cleaning Code	W (Crypton Method)
Warranty	10 years

Fabric shown railroaded.

NFPA 260 (UFAC) Class 1

Custom colors available through Unique Solutions.

Meets or exceeds these ACT Performance standards:

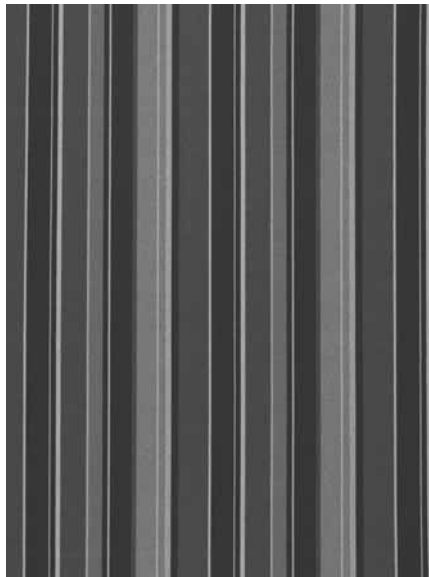
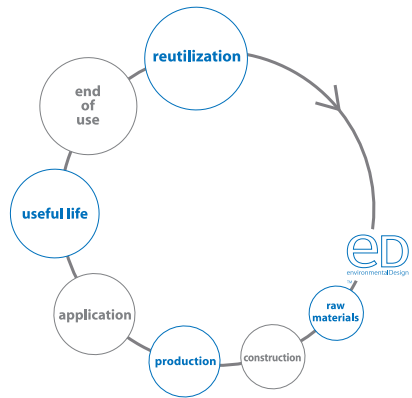


* ACT Registered Certification Marks



environmental Design

recycled ingredients
energy use
water use
reutilization of production waste
low emitting
recyclable



There may be variation in color, texture and finish between the sample shown and the actual product.

©DesignTex

DesignTex
800 221 1540
www.designtex.com

A Steelcase Company

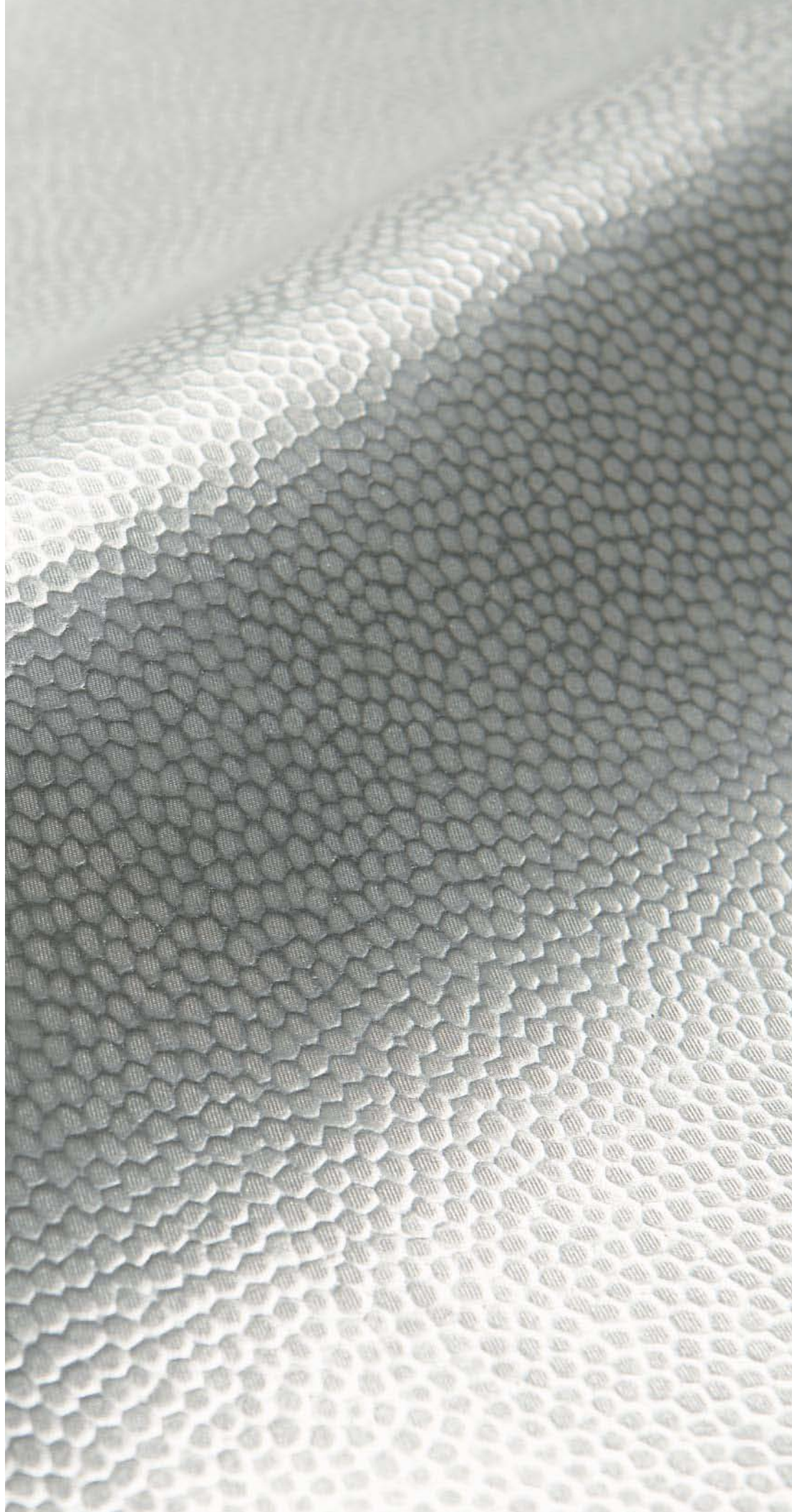
Note: Image has been sized to represent all colors

DESIGN
TEX

Tumble Stones
3243

Upholstery

environmental Design
extreme Performance



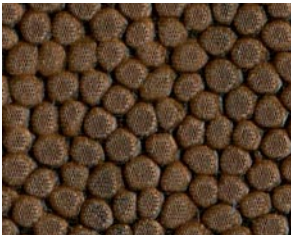
Tumble Stones
3243



3243-101 Gelato



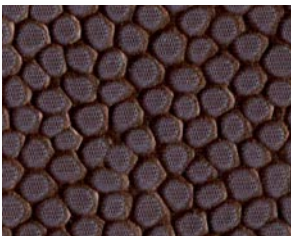
3243-801 Aluminum



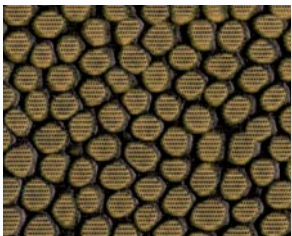
3243-102 Penny



3243-401 Denim



3243-301 Garnet



3243-501 Lodén



3243-103 Coffee



3243-802 Midnight

Usage	Upholstery
Width	54"
Repeat	none
Contents	100% Nylon Microfiber
Abrasion	100,000 Wyzenbeek
Cleaning Code	WS
Warranty	10 years

Custom colors available through Unique Solutions.

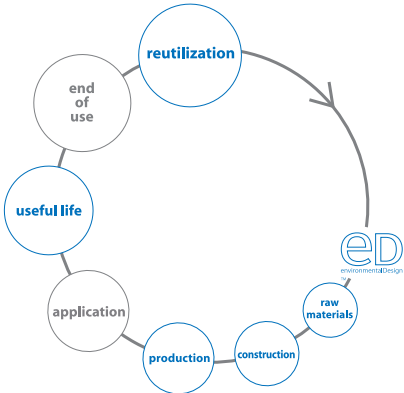
Meets or exceeds these ACT Performance standards:



* ACT Registered Certification Marks

environmental Design

alternative to pvc
compatible for closed loop
chemically optimized
energy use
water use
reutilization of production waste
green cleaning compatible
low emitting
recyclable



There may be variation in color, texture and finish
between the sample shown and the actual product.

© Designtex

Designtex
800 221 1540
designtex.com

Designtex operates as a carbon neutral company
A Steelcase Company

DESIGN
Tex

Tumbleweed
2845

Upholstery

environmental Design
extreme Performance



Tumbleweed
2845



2845-101



2845-401



2845-402



2845-501



2845-502



2845-503



2845-701



2845-901



2845-902



2845-903

Usage	Upholstery
Width	54"
Repeat	V-1/4" H-1/4"
Finish	Crypton® Green
Contents	100% Recycled Polyester
Abrasion	100,000 Wyzenbeek
Cleaning Code	W (Crypton Method)
Warranty	10 years

NFPA 260 (UFAC) Class 1

Custom colors available through Unique Solutions.

Meets or exceeds these ACT Performance standards:

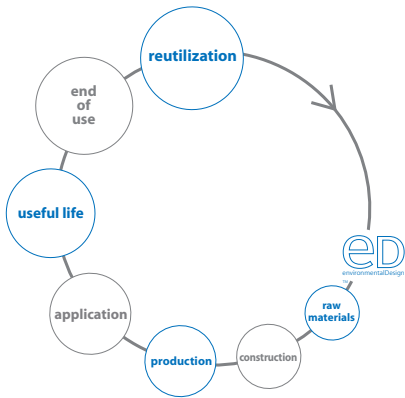


* ACT Registered Certification Marks



environmental Design

recycled ingredients
energy use
water use
reutilization of production waste
low emitting
recyclable



There may be variation in color, texture and finish between the sample shown and the actual product.

©DesignTex
DesignTex
800 221 1540
www.designtex.com

A Steelcase Company

DESIGN
TEX

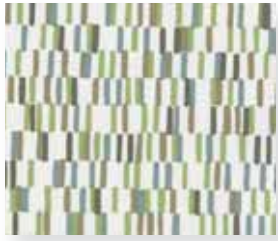
Uptown
2024

Upholstery

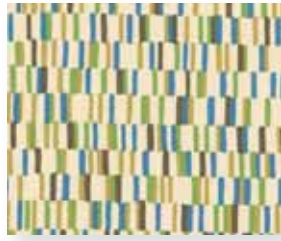
environmental Design
extreme Performance



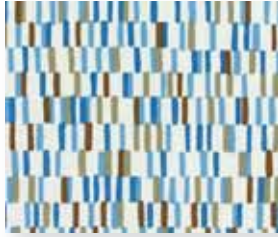
Uptown 2024



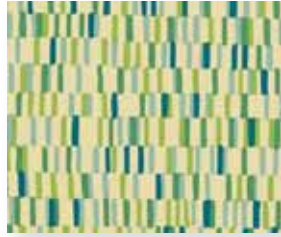
2024-101



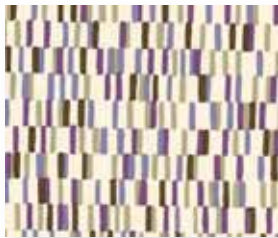
2024-102



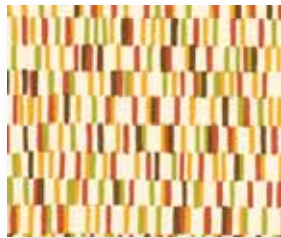
2024-401



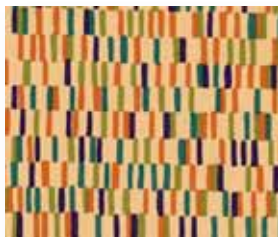
2024-501



2024-601



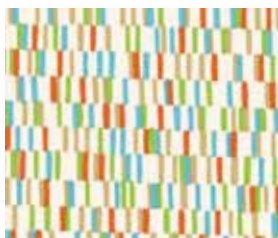
2024-701



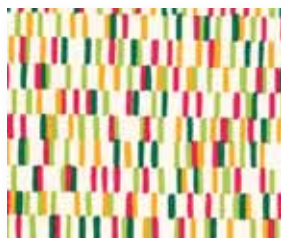
2024-702



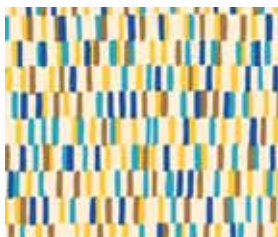
2024-801



2024-901



2024-902



2024-903



2024-904



2024-905

Note: Image has been sized to represent all colors

Usage	Upholstery
Width	54"
Repeat	V-24" H-18"
Contents	70% Recycled Polyester 30% Polyurethane
Abrasion	100,000 Wire Screen
Cleaning Code	WS
Warranty	10 years

NFPA 260 (UFAC) Class 1

Custom colors available through Unique Solutions.

Meets or exceeds these ACT Performance standards:



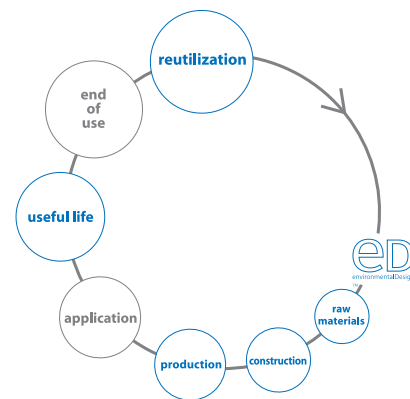
* ACT Registered Certification Marks

Passes The Collaborative for High Performance Schools Section 01350.

This product may contribute to the LEED Materials and Resources Credit for Recycled Content.

environmental Design

recycled ingredients
alternative to pvc
chemically optimized
water use
low emitting
waste to fuel



There may be variation in color, texture and finish between the sample shown and the actual product.

©DesignTex

DesignTex
800 221 1540
www.designtex.com

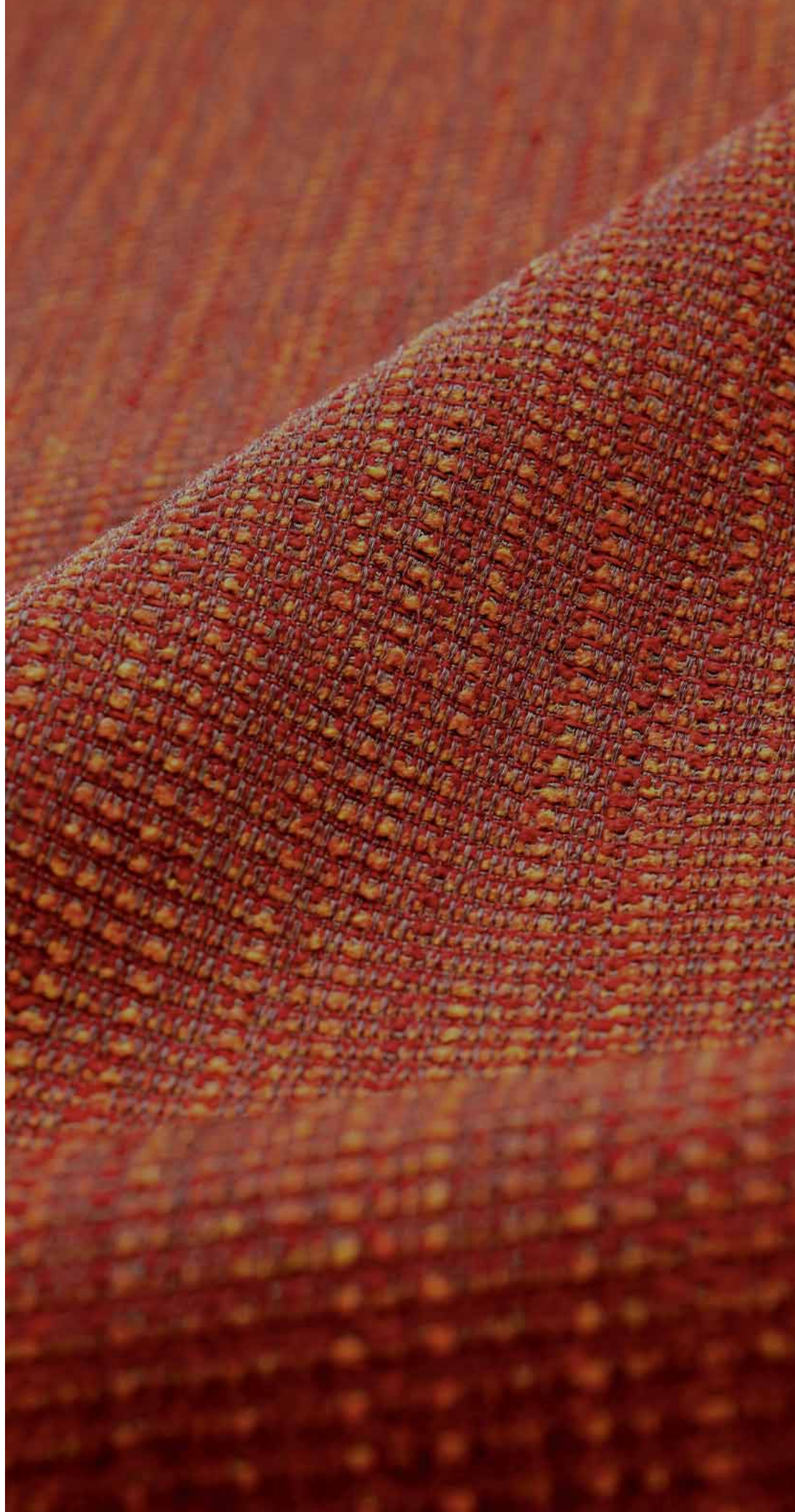
A Steelcase Company

DESIGN
TEX

Wensley
3248

Upholstery

environmental Design
extreme Performance



Wensley

3248



3248-101 Oatmeal



3248-201 Lemondrop



3248-501 Citron



3248-102 Greige



3248-701 Tangelo



3248-403 Pool



3248-801 Truffle



3248-301 Chili



3248-401 Cornflower



3248-802 Tar



3248-601 Concord



3248-402 Midnight



3248-103 Espresso

Usage	Upholstery
Width	54"
Repeat	None
Finish	NanoSphere®
Backing	Acrylic
Contents	100% Solution Dyed Nylon
Abrasion	80,000 Wyzenbeek
Cleaning Code	WS
Warranty	10 years

Custom colors available through Unique Solutions.

Meets or exceeds these ACT Performance standards:



* ACT Registered Certification Marks

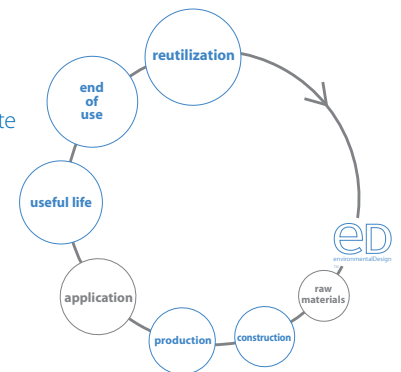


Based on environmentally optimal C6 nanotechnology, NanoSphere® offers:

- Superior stain resistance
- Water repellent
- Easy cleaning
- Durable and long lasting
- Maintains textile appearance and character
- NanoSphere technology is based on the bluesign® standard

environmental Design

compatible for closed loop
water use
reutilization of production waste
green cleaning compatible
low emitting
take back program
recyclable



There may be variation in color, texture and finish between the sample shown and the actual product.

© Designtex

Designtex
800 221 1540
designtex.com

Designtex operates as a carbon neutral company

A Steelcase Company

DESIGN
TEX

Westside
3303

Upholstery

environmental Design
extreme Performance

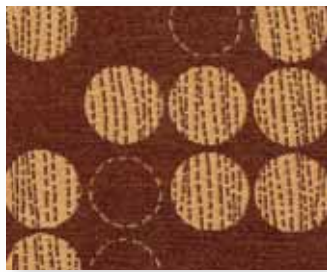


Westside

3303



3303-101



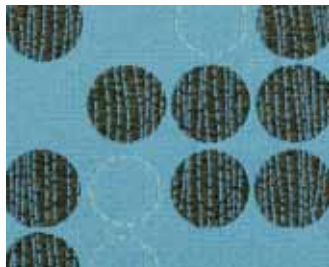
3303-102



3303-301



3303-302



3303-401



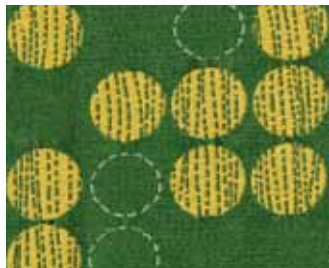
3303-402



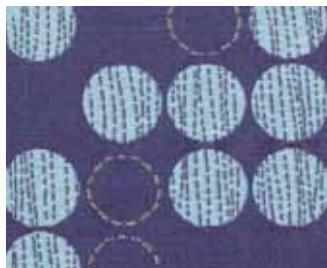
3303-501



3303-502



3303-503



3303-601



3303-701



3303-801

Usage	Upholstery
Width	54"
Repeat	V-14 1/2" H-14 1/4"
Finish	NanoSphere™
Contents	100% Solution Dyed Nylon
Abrasion	100,000 Wyzenbeek
Cleaning Code	WS
Warranty	10 years

NFPA 260 (UFAC) Class 1

Custom colors available through Unique Solutions.

Meets or exceeds these ACT Performance standards:



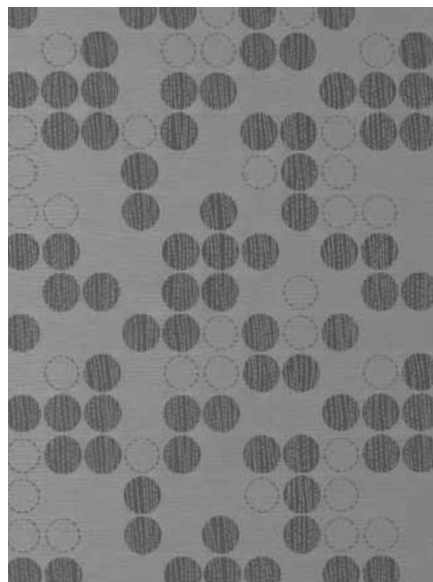
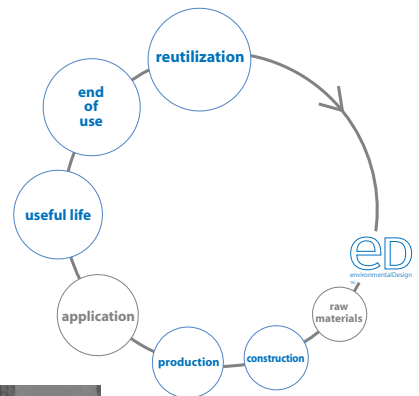
* ACT Registered Certification Marks



Solution Dyed Nylon products are supported by a reclamation program, enabling the nylon fiber to be recycled into nylon carpet. Please contact your local Designtex sales representative for reclamation details.

environmental Design

compatible for closed loop
water use
reutilization of production waste
green cleaning compatible
low emitting
take back program
recyclable



There may be variation in color, texture and finish between the sample shown and the actual product.

Designtex is the holder of a NanoSphere™ License.

©Designtex
Designtex
800 221 1540
www.designtex.com

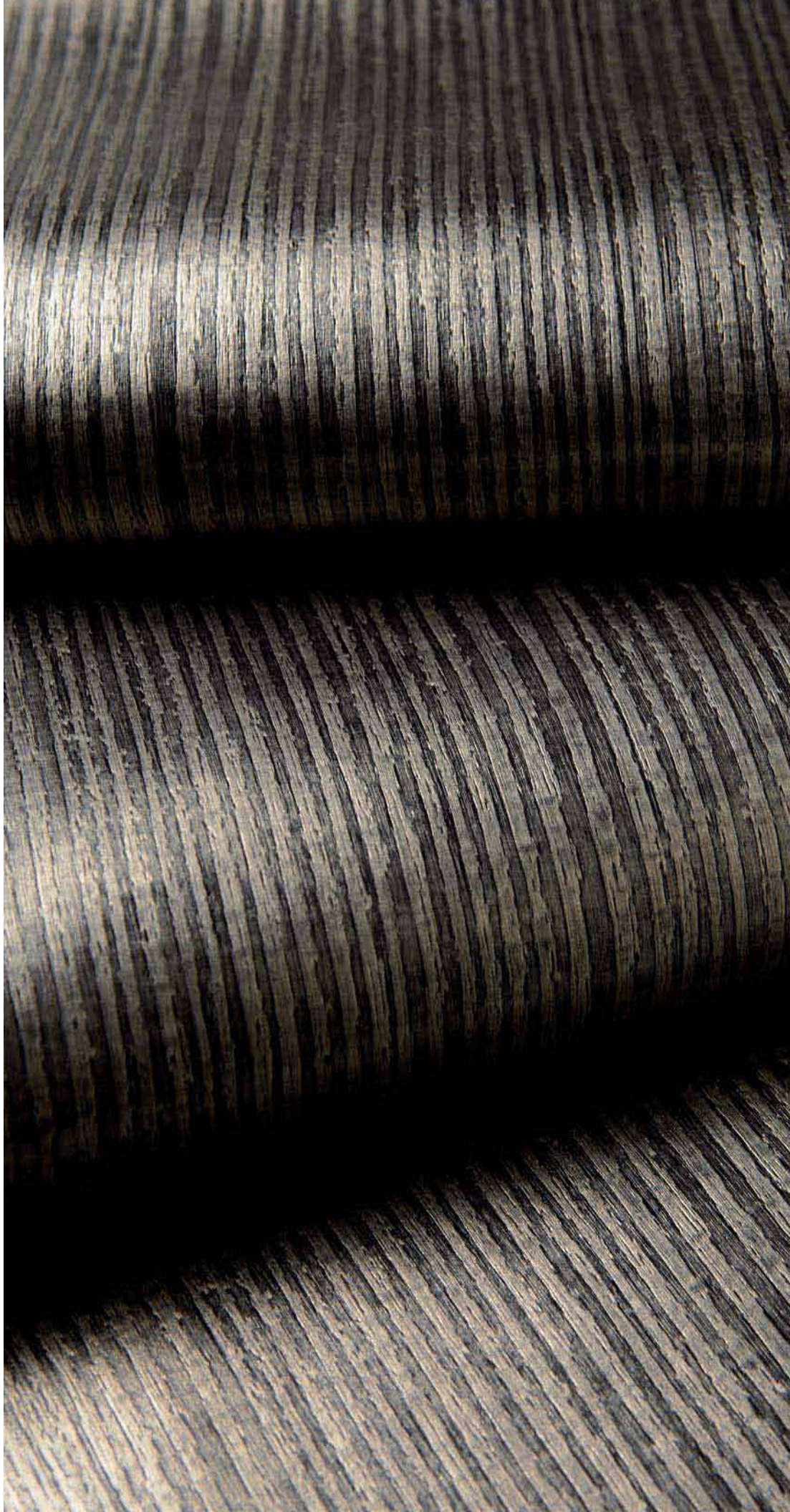
A Steelcase Company

DESIGN
Tex

Wood Work
3244

Upholstery

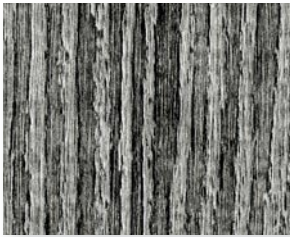
environmental Design
extreme Performance



Wood Work
3244



3244-101 Birch



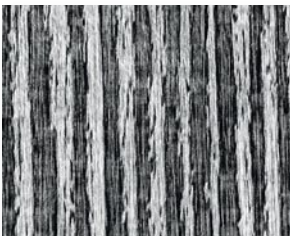
3244-103 Walnut



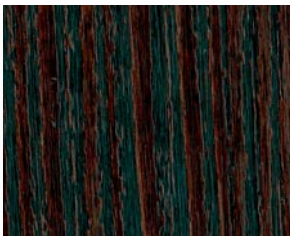
3244-102 Ash



3244-104 Chestnut



3244-801 Padouk



3244-301 Redwood

Usage	Upholstery
Width	54"
Repeat	none
Contents	100% Nylon Microfiber
Abrasion	100,000 Wyzenbeek
Cleaning Code	WS
Warranty	10 years

Custom colors available through Unique Solutions.

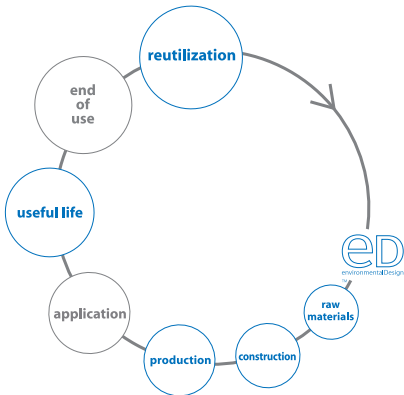
Meets or exceeds these ACT Performance standards:



* ACT Registered Certification Marks

environmental Design

alternative to pvc
compatible for closed loop
chemically optimized
energy use
water use
reutilization of production waste
green cleaning compatible
low emitting
recyclable



There may be variation in color, texture and finish
between the sample shown and the actual product.

© Designtex

Designtex
800 221 1540
designtex.com

Designtex operates as a carbon neutral company
A Steelcase Company

